

# MOC1 Rabbit pAb

货号: **AYP22654**

## 产品信息

反应	Oryza sativa
宿主	Rabbit
克隆性	Polyclonal
预测反应	
应用	WB
推荐浓度	<b>WB:</b> 1:500 - 1:2000
理论分子量	46kDa
实测分子量	50kDa
形式	Liquid
保存条件	Store at -20°C. Avoid freeze / thaw cycles. Buffer: PBS with 0.01% thiomersal, 50% glycerol, pH7.3.
偶联物	Unconjugated
阳性对照	stems (before flower), leaves sheath (before flower)
细胞定位	nucleus
纯化	Affinity purification

## 抗原信息

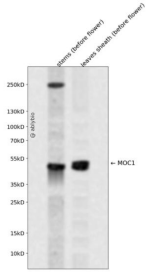
抗原信息	A synthetic peptide of Oryza sativa MOC1.
序列	

## 靶点信息

研究背景	Putative transcription regulator that controls rice tillering by initiating axillary buds and promoting their outgrowth. Rice tiller is a specialized grain-bearing branch that is formed on the unelongated basal internode and grows independently of the mother stem (culm) by means of its own adventitious roots.
基因ID	107278653
基因名	

Swiss	Q84MM9
别名	monoculm 1

## 产品验证



Western blot analysis of MOC1 expressed in stems (before flower),leaves sheath (before flower) using MOC1 Rabbit pAb at 1:1000. Secondary antibody: HRP Goat Anti-Rabbit IgG (H+L) at 1:5000. Lysates/protein s: 30ug per lane. Blocking buffer: 5% non-fat dry milk in TBST. Detection: ECL Enhanced Kit. Exposure time: 120s.

## 实验步骤

访问官网浏览详情: [www.ablybio.cn](http://www.ablybio.cn)