

NAL1 Rabbit pAb

货号: **AYP22647**

产品信息

反应	Oryza sativa
宿主	Rabbit
克隆性	Polyclonal
预测反应	
应用	WB
推荐浓度	WB: 1:500 - 1:2000
理论分子量	63kDa
实测分子量	55kDa
形式	Liquid
保存条件	Store at -20°C. Avoid freeze / thaw cycles. Buffer: PBS with 0.01% thiomersal,50% glycerol,pH7.3.
偶联物	Unconjugated
阳性对照	stems (before flower),leaves sheath (before flower),flag leaves (after flower)
细胞定位	cytoplasm,nucleoplasm
纯化	Affinity purification

抗原信息

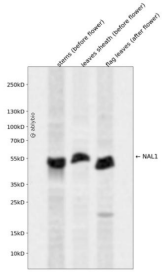
抗原信息	Recombinant protein of Oryza sativa NAL1.
序列	

靶点信息

研究背景	Involved in the regulation of lateral leaf growth. May be involved in the regulation of basipetal polar auxin transport (PAT) and vascular patterning in leaves. Controls photosynthesis rate by regulating carboxylation efficiency and consequently photosynthesis rate. Controls panicle and spikelet numbers, and grain yield
基因ID	4336986
基因名	

Swiss	B4XT64
别名	GFP; SPIKE; qFLW4; LSCHL4; OsJ_16147

产品验证



Western blot analysis of NAL1 expressed in stems (before flower),leaves sheath (before flower),flag leaves (after flower) using NAL1 Rabbit pAb at 1:1000. Secondary antibody: HRP Goat Anti-Rabbit IgG (H+L) at 1:5000. Lysates/proteins: 30ug per lane. Blocking buffer: 5% non-fat dry milk in TBST. Detection: ECL Enhanced Kit. Exposure time: 120s.

实验步骤

访问官网浏览详情: www.ablybio.cn