

ALPK1 Rabbit pAb

货号: **AYP22639**

产品信息

反应	Human
宿主	Rabbit
克隆性	Polyclonal
预测反应	
应用	WB
推荐浓度	WB: 1:500 - 1:1000
理论分子量	
实测分子量	108KDa/130KDa
形式	Liquid
保存条件	Store at -20°C. Avoid freeze / thaw cycles. Buffer: PBS with 0.01% thiomersal,50% glycerol,pH7.3.
偶联物	Unconjugated
阳性对照	HepG2,SW620
细胞定位	centrosome,cilium,cytosol,spindle pole
纯化	Affinity purification

抗原信息

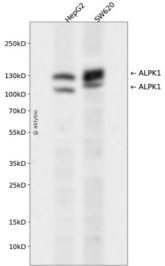
抗原信息	Recombinant fusion protein containing a sequence corresponding to amino acids 340-500 of human ALPK 1 (NP_001095876.1).
序列	RDDEPVTGKQELHSFVKAAGLTTVHRRLLHGETGTVHAASQLCKEAMGKLYNFSTSSRSQDREALSQEVMSVIAQVKEH LQVQSFSNVDDRSYVPESFECRLDKLILHGQGDFQKILDYTSQHHTSVCEVFESDCGNNKNEQKDAKTGVCITALKTEIKN I

靶点信息

研究背景	This gene encodes an alpha kinase. Mice which were homozygous for disrupted copies of this gene exhibited coordination defects (PMID: 21208416). Multiple transcript variants encoding different isoforms have been found for this gene.
基因ID	80216

基因名	ALPK1
Swiss	Q96QP1
别名	

产品验证



Western blot analysis of ALPK1 expressed in HepG2,SW620 using ALPK1 Rabbit pAb at 1:1000. Secondary antibody: HRP Goat Anti-Rabbit IgG (H+L) at 1:5000. Lysates/proteins: 30ug per lane. Blocking buffer: 5 % non-fat dry milk in TBST. Detection: ECL Enhanced Kit. Exposure time: 120s.

实验步骤

访问官网浏览详情: www.ablybio.cn