

pan-Ubiquitin Remnant Motif (K-ε-GG) Rabbit pAb

货号: AYP22634

产品信息

反应	Human,Mouse
宿主	Rabbit
克隆性	Polyclonal
预测反应	
应用	WB
推荐浓度	WB: 1:500 - 1:1000
理论分子量	
实测分子量	15-100KDa
形式	Liquid
保存条件	Store at -20°C. Avoid freeze / thaw cycles. Buffer: PBS with 0.01% thiomersal,50% glycerol,pH7.3.
偶联物	Unconjugated
阳性对照	293T,NIH/3T3,HeLa
细胞定位	
纯化	Affinity purification

抗原信息

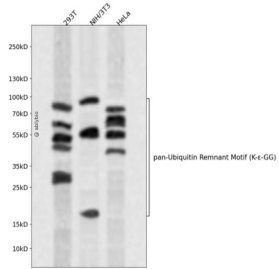
抗原信息	A synthetic peptide corresponding to a sequence containing ubiquitinated Motif (K-ε-GG)
序列	

靶点信息

研究背景	Ubiquitination plays a key role in protein degradation and signal transduction. Characterization of ubiquitination sites is important for understanding the role of this modification in cellular processes and disease. Ubiquitination sites are usually identified by detection of Lys-?-Gly-Gly (K-?-GG)-remnant peptides, which are generated by tryptic digestion of proteomes. The di-glycine remnant left at sites of ubiquitination after trypsin digestion through cleavage of the C-terminal -RGG sequence on ubiquitin (K-ε-GG). This Ubiquitin K-ε-GG remnant motif antibody will recognize the di-glycine remnant independent of flanking amino acid sequence.
------	---

基因ID	
基因名	
Swiss	
别名	

产品验证



Western blot analysis of pan-Ubiquitin Remnant Motif (K-ε-GG) expressed in 293T,NIH/3T3,HeLa using pan-Ubiquitin Remnant Motif (K-ε-GG) Rabbit pAb at 1:1000. Secondary antibody: HRP Go at Anti-Rabbit IgG (H+L) at 1:5000. Lysates/proteins: 30ug per lane. Blocking buffer: 5% non-fat dry milk in TBST. Detection: ECL Enhanced Kit. Exposure time: 120s.

实验步骤

访问官网浏览详情: www.ablybio.cn