

MPC1 Rabbit pAb

货号: **AYP22403**

产品信息

反应	Human,Mouse,Rat
宿主	Rabbit
克隆性	Polyclonal
预测反应	
应用	WB IP
推荐浓度	WB: 1:500 - 1:1000 IP: 1:500 - 1:1000
理论分子量	12kDa
实测分子量	12KDa
形式	Liquid
保存条件	Store at -20°C. Avoid freeze / thaw cycles. Buffer: PBS with 0.01% thiomersal,50% glycerol,pH7.3.
偶联物	Unconjugated
阳性对照	HepG2,K-562,Mouse liver,Rat heart
细胞定位	inner mitochondrial membrane protein complex,mitochondrial inner membrane,mitochondrion
纯化	Affinity purification

抗原信息

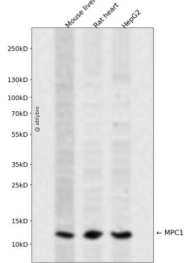
抗原信息	A synthetic peptide corresponding to a sequence within amino acids 50-109 of human MPC1 (NP_057182.1).
序列	IISGRMTFALCCYSLTFMRFAYKVQPRNWLLFACHATNEVAQLIQGGRLIKHEMKTASA

靶点信息

研究背景	The protein encoded by this gene is part of an MPC1/MPC2 heterodimer that is responsible for transporting pyruvate into mitochondria. The encoded protein is found in the inner mitochondrial membrane. Defects in this gene are a cause of mitochondrial pyruvate carrier deficiency. Several transcript variants, some protein coding and one non-protein coding, have been found for this gene.
基因ID	51660

基因名	MPC1
Swiss	Q9Y5U8
别名	BRP44L; CGI-129; MPYCD; dj68L15.3

产品验证



Western blot analysis of MPC1 expressed in Mouse liver, Rat heart, HepG2 using MPC1 Rabbit pAb at 1:1000. Secondary antibody: HRP Goat Anti-Rabbit IgG (H+L) at 1:5000. Lysates/proteins: 30ug per lane. Blocking buffer: 5% non-fat dry milk in TBST. Detection: ECL Enhanced Kit. Exposure time: 120s.

实验步骤

访问官网浏览详情: www.ablybio.cn