

Phospho-LRP6-S1490 Rabbit pAb

货号: **AYP22392**

产品信息

反应	Human
宿主	Rabbit
克隆性	Polyclonal
预测反应	
应用	WB
推荐浓度	WB: 1:100 - 1:500
理论分子量	180kDa
实测分子量	180KDa
形式	Liquid
保存条件	Store at -20°C. Avoid freeze / thaw cycles. Buffer: PBS with 0.01% thiomersal,50% glycerol,pH7.3.
偶联物	Unconjugated
阳性对照	HeLa
细胞定位	Endoplasmic reticulum,Membrane,Single-pass type I membrane protein
纯化	Affinity purification

抗原信息

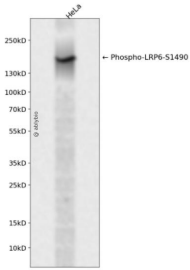
抗原信息	A synthetic phosphorylated peptide around S1490 of human LRP6 (NP_002327.2).
序列	PPSPA

靶点信息

研究背景	This gene encodes a member of the low density lipoprotein (LDL) receptor gene family. LDL receptors are transmembrane cell surface proteins involved in receptor-mediated endocytosis of lipoprotein and protein ligands. The protein encoded by this gene functions as a receptor or, with Frizzled, a co-receptor for Wnt and thereby transmits the canonical Wnt/beta-catenin signaling cascade. Through its interaction with the Wnt/beta-catenin signaling cascade this gene plays a role in the regulation of cell differentiation, proliferation, and migration and the development of many cancer types. This protein undergoes gamma-secretase dependent RIP- (regulated intramembrane proteolysis) processing but the precise locations of the cleavage sites have not been determined.
------	---------------------------------------------------------------------------------------------------------------------------------------------------------------------------------------------------------------------------------------------------------------------------------------------------------------------------------------------------------------------------------------------------------------------------------------------------------------------------------------------------------------------------------------------------------------------------------------------------------------------------------------------------------------------------------------------------------------------------------------------------------------------------------------------------

基因ID	4040
基因名	LRP6
Swiss	O75581
别名	LRP6;ADCAD2;STHAG7

产品验证



Western blot analysis of Phospho-LRP6-S1490 expressed in HeLa using Phospho-LRP6-S1490 Rabbit pAb at 1:1000. Secondary antibody: HRP Goat Anti-Rabbit IgG (H+L) at 1:5000. Lysates/proteins: 30ug per lane. Blocking buffer: 5% non-fat dry milk in TBST. Detection: ECL Enhanced Kit. Exposure time: 120 s.

实验步骤

访问官网浏览详情: www.ablybio.cn