

# Phospho-LAT-Y191 Rabbit pAb

货号: AYP22390

## 产品信息

反应	Human,Mouse
宿主	Rabbit
克隆性	Polyclonal
预测反应	
应用	WB
推荐浓度	<b>WB:</b> 1:500 - 1:1000
理论分子量	24kDa/27kDa/28kDa
实测分子量	36KDa
形式	Liquid
保存条件	Store at -20°C. Avoid freeze / thaw cycles. Buffer: PBS with 0.01% thiomersal,50% glycerol,pH7.3.
偶联物	Unconjugated
阳性对照	Jurkat,NIH/3T3
细胞定位	Cell membrane,Single-pass type III membrane protein
纯化	Affinity purification

## 抗原信息

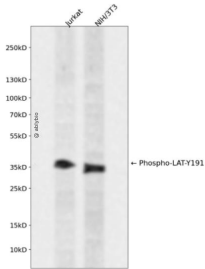
抗原信息	A synthetic phosphorylated peptide around Y191 of human LAT (NP_001014987.1).
序列	REYVN

## 靶点信息

研究背景	The protein encoded by this gene is phosphorylated by ZAP-70/Syk protein tyrosine kinases following activation of the T-cell antigen receptor (TCR) signal transduction pathway. This transmembrane protein localizes to lipid rafts and acts as a docking site for SH2 domain-containing proteins. Upon phosphorylation, this protein recruits multiple adaptor proteins and downstream signaling molecules into multimolecular signaling complexes located near the site of TCR engagement. Alternative splicing results in multiple transcript variants encoding different isoforms.
基因ID	27040

基因名	LAT
Swiss	O43561
别名	LAT;LAT1;pp36;IMD52

## 产品验证



Western blot analysis of Phospho-LAT-Y191 expressed in Jurkat,NIH/3T3 using Phospho-LAT-Y191 Rabbit pAb at 1:1000. Secondary antibody: HRP Goat Anti-Rabbit IgG (H+L) at 1:5000. Lysates/proteins: 30ug per lane. Blocking buffer: 5% non-fat dry milk in TBST. Detection: ECL Enhanced Kit. Exposure time: 120s.

## 实验步骤

访问官网浏览详情: [www.ablybio.cn](http://www.ablybio.cn)