

# STING Rabbit pAb

货号: **AYP22381**

## 产品信息

反应	Human,Mouse,Rat
宿主	Rabbit
克隆性	Polyclonal
预测反应	
应用	WB IHC
推荐浓度	<b>WB:</b> 1:500 - 1:1000 <b>IHC:</b> 1:50 - 1:200
理论分子量	42kDa
实测分子量	33KDa/35KDa
形式	Liquid
保存条件	Store at -20°C. Avoid freeze / thaw cycles. Buffer: PBS with 0.01% thiomersal,50% glycerol,pH7.3.
偶联物	Unconjugated
阳性对照	293T,A-549,RAW264.7
细胞定位	autophagosome,cytoplasm,cytosol,endoplasmic reticulum,endosome,Golgi apparatus,mitochondrial outer membrane,nucleoplasm,perinuclear region of cytoplasm,peroxisome,plasma membrane
纯化	Affinity purification

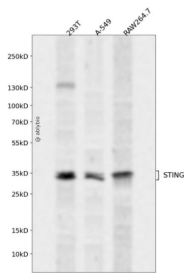
## 抗原信息

抗原信息	Recombinant protein of Mouse STING.
序列	

## 靶点信息

研究背景	Facilitator of innate immune signaling that acts as a sensor of cytosolic DNA from bacteria and viruses and promotes the production of type I interferon (IFN-alpha and IFN-beta. Innate immune response is triggered in response to non-CpG double-stranded DNA from viruses and bacteria delivered to the cytoplasm. Acts by binding cyclic dinucleotides: recognizes and binds cyclic di-GMP (c-di-GMP, a second messenger produced by bacteria, and cyclic GMP-AMP (cGAMP, a messenger produced by CGAS in response to DNA viruses in the cytosol. Upon binding of c-di-GMP or cGAMP, STING1 oligomerizes, translocates from the endoplasmic reticulum and is phosphorylated by TBK1 on the pLxIS motif, leading to recruitment and subsequent activation of the transcription factor IRF3 to induce expression of type I interferon and exert a potent anti-viral state. In addition to promote the production of type I interferons, plays a direct role in autophagy. Following cGAMP-binding, STING1 buds from the endoplasmic reticulum into COPII vesicles, which then form the endoplasmic reticulum-Golgi intermediate compartment (ERGIC (By similarity.
基因ID	72512
基因名	
Swiss	Q3TBT3
别名	ERIS; MPYS; Mita; STING; Tmem173; STING-beta; 2610307O08Rik

## 产品验证



Western blot analysis of STING expressed in 293T, A-549, RAW264.7 using STING Rabbit pAb at 1:1000. Secondary antibody: HRP Goat Anti-Rabbit IgG (H+L) at 1:5000. Lysates/proteins: 30ug per lane. Blocking buffer: 5% non-fat dry milk in TBST. Detection: ECL Enhanced Kit. Exposure time: 120s.

## 实验步骤

访问官网浏览详情: [www.ablybio.cn](http://www.ablybio.cn)