

SMARCD3 Rabbit pAb

货号: **AYP22380**

产品信息

反应	Human,Mouse,Rat
宿主	Rabbit
克隆性	Polyclonal
预测反应	
应用	WB
推荐浓度	WB: 1:500 - 1:1000
理论分子量	55kDa
实测分子量	58KDa
形式	Liquid
保存条件	Store at -20°C. Avoid freeze / thaw cycles. Buffer: PBS with 0.01% thiomersal,50% glycerol,pH7.3.
偶联物	Unconjugated
阳性对照	HeLa,PC-3,Mouse heart,Rat heart
细胞定位	cytoplasm,nucleoplasm,nucleus
纯化	Affinity purification

抗原信息

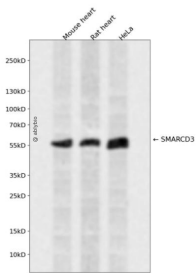
抗原信息	Recombinant fusion protein containing a sequence corresponding to amino acids 275-440 of human SMA RCD3 (NP_001003801.1).
序列	LHTQSRSAIVQALWQYVKTNRLQDSDHKEYINGDKYFQQIFDCPRLKFSEIPQRLTALLPPDPVINHVISVDPSDQKKTAC YDIDVEVEEPLKGMSSFLLSTANQQEISALDSKIHETIESINQLKIQRDFMLSFSRDPKGYVQDLLRSQSRDLKVMTDVAG N

靶点信息

研究背景	The protein encoded by this gene is a member of the SWI/SNF family of proteins, whose members display helicase and ATPase activities and which are thought to regulate transcription of certain genes by altering the chromatin structure around those genes. The encoded protein is part of the large ATP-dependent chromatin remodeling complex SNF/SWI and has sequence similarity to the yeast Swp73 protein. Multiple alternatively spliced transcript variants have been found for this gene, but the biological validity of some variants has not been determined.
------	---

基因ID	6604
基因名	SMARCD3
Swiss	Q6STE5
别名	Rsc6p; BAF60C; CRACD3

产品验证



Western blot analysis of SMARCD3 expressed in Mouse heart, Rat heart, HeLa using SMARCD3 Rabbit p Ab at 1:1000. Secondary antibody: HRP Goat Anti-Rabbit IgG (H+L) at 1:5000. Lysates/proteins: 30ug per lane. Blocking buffer: 5% non-fat dry milk in TBST. Detection: ECL Enhanced Kit. Exposure time: 12 0s.

实验步骤

访问官网浏览详情: www.ablybio.cn