

# SETD1B Rabbit pAb

货号: AYP22363

## 产品信息

反应	Mouse,Rat
宿主	Rabbit
克隆性	Polyclonal
预测反应	
应用	WB
推荐浓度	<b>WB:</b> 1:100 - 1:500
理论分子量	213kDa
实测分子量	250KDa
形式	Liquid
保存条件	Store at -20°C. Avoid freeze / thaw cycles. Buffer: PBS with 0.05% proclin300,50% glycerol,pH7.3.
偶联物	Unconjugated
阳性对照	Mouse lung,Rat lung
细胞定位	histone methyltransferase complex,nuclear speck,nucleoplasm
纯化	Affinity purification

## 抗原信息

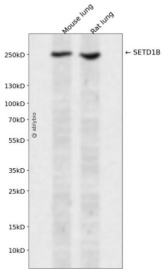
抗原信息	Recombinant fusion protein containing a sequence corresponding to amino acids 1673-1770 of human SETD1B (NP_001340274.1).
序列	SEFEEMTILYDIWNGGIDEEDIRFLCVTYERLLQQDNGMDWLNDTLWVYHPSTSLSSAKKKKRDDGIREHVTGCARSEGF YTIDKKDKLRYLNSSRAS

## 靶点信息

研究背景	SET1B is a component of a histone methyltransferase complex that produces trimethylated histone H3 at Lys4 (Lee et al., 2007 [PubMed 17355966]).
基因ID	23067
基因名	SETD1B

<b>Swiss</b>	Q9UPS6
别名	KMT2G; Set1B

## 产品验证



Western blot analysis of SETD1B expressed in Mouse lung,Rat lung using SETD1B Rabbit pAb at 1:1000. Secondary antibody: HRP Goat Anti-Rabbit IgG (H+L) at 1:5000. Lysates/proteins: 30ug per lane. Blocking buffer: 5% non-fat dry milk in TBST. Detection: ECL Enhanced Kit. Exposure time: 120s.

## 实验步骤

访问官网浏览详情: [www.ablybio.cn](http://www.ablybio.cn)