

PHACTR1 Rabbit pAb

货号: **AYP22362**

产品信息

反应	Human,Mouse,Rat
宿主	Rabbit
克隆性	Polyclonal
预测反应	
应用	WB
推荐浓度	WB: 1:500 - 1:1000
理论分子量	66kDa
实测分子量	75KDa
形式	Liquid
保存条件	Store at -20°C. Avoid freeze / thaw cycles. Buffer: PBS with 0.01% thiomersal,50% glycerol,pH7.3.
偶联物	Unconjugated
阳性对照	C6,SH-SY5Y,U-251MG,U-87MG,Mouse brain,Rat brain
细胞定位	cytosol,nucleus,synapse
纯化	Affinity purification

抗原信息

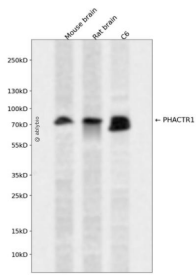
抗原信息	Recombinant fusion protein containing a sequence corresponding to amino acids 154-380 of human PHACTR1 (NP_112210.1).
序列	IKRGVLKEIYDKDGELSLISNEEDSLENGQSLSSQLSLPALSEMPEVPMRPDPCSYEVLQPSDIMDGPDPGAPVKLPCLPVK LSPPLPPKKVMICMPVGGPDLVSYTAQKSGQGVAQHHTVLPVSIQHLQYGSQHLPSSTTGS LPMHPSGCRMID ELNKTAMTMQRLESSEQRVPCSTSYHSSGLHSGDGVTKAGPMGLPEIRQVPTTVIECDDNKENV

靶点信息

研究背景	The protein encoded by this gene is a member of the phosphatase and actin regulator family of proteins. This family member can bind actin and regulate the reorganization of the actin cytoskeleton. It plays a role in tubule formation and in endothelial cell survival. Polymorphisms in this gene are associated with susceptibility to myocardial infarction, coronary artery disease and cervical artery dissection. Alternative splicing of this gene results in multiple transcript variants.
------	---

基因ID	221692
基因名	PHACTR1
Swiss	Q9C0D0
别名	RPEL; RPEL1; EIEE70; dj257A7.2

产品验证



Western blot analysis of PHACTR1 expressed in Mouse brain, Rat brain, C6 using PHACTR1 Rabbit pAb at 1:1000. Secondary antibody: HRP Goat Anti-Rabbit IgG (H+L) at 1:5000. Lysates/proteins: 30ug per lane. Blocking buffer: 5% non-fat dry milk in TBST. Detection: ECL Enhanced Kit. Exposure time: 120s.

实验步骤

访问官网浏览详情: www.ablybio.cn