

RABAC1 Rabbit pAb

货号: **AYP22357**

产品信息

反应	Human,Mouse,Rat
宿主	Rabbit
克隆性	Polyclonal
预测反应	
应用	WB
推荐浓度	WB: 1:500 - 1:1000
理论分子量	21kDa
实测分子量	21KDa
形式	Liquid
保存条件	Store at -20°C. Avoid freeze / thaw cycles. Buffer: PBS with 0.01% thiomersal,50% glycerol,pH7.3.
偶联物	Unconjugated
阳性对照	293T,U-251MG,SGC-7901,Mouse lung,Rat testis,Rat ovary
细胞定位	Golgi apparatus,plasma membrane,synaptic vesicle
纯化	Affinity purification

抗原信息

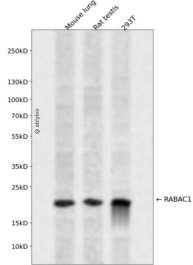
抗原信息	Recombinant fusion protein containing a sequence corresponding to amino acids 1-185 of human RABAC 1 (NP_006414.2).
序列	MAAQKDQKDAEAEGLSGTLLPKLIPSGAGREWLERRRATIRPWSTFVDQQRFSRPRNLGELCQRLVRNVEYYQSNYVFVFLGLILYCVVTSPMLLVALAVFFGACYILYLRRTLESKLVLFGREVSPAHQYALAGGISFPFFWLAGAGSAVFWVLGATLWVIGSHAAFHQIEAVDGEELQMEPV

靶点信息

研究背景	General Rab protein regulator required for vesicle formation from the Golgi complex. May control vesicle docking and fusion by mediating the action of Rab GTPases to the SNARE complexes. In addition it inhibits the removal of Rab GTPases from the membrane by GDI.
基因ID	10567

基因名	RABAC1
Swiss	Q9UI14
别名	PRA1; YIP3; PRAF1

产品验证



Western blot analysis of RABAC1 expressed in Mouse lung,Rat testis,293T using RABAC1 Rabbit pAb at 1:1000. Secondary antibody: HRP Goat Anti-Rabbit IgG (H+L) at 1:5000. Lysates/proteins: 30ug per lane. Blocking buffer: 5% non-fat dry milk in TBST. Detection: ECL Enhanced Kit. Exposure time: 120s.

实验步骤

访问官网浏览详情: www.ablybio.cn