

pan-Tri-Methyl lysine Rabbit pAb

货号: AYP22356

产品信息

反应	Human,Mouse,Rat
宿主	Rabbit
克隆性	Polyclonal
预测反应	
应用	WB IP ChIP
推荐浓度	WB: 1:500 - 1:1000 IP: 1:500 - 1:1000 ChIP: 1:500 - 1:1000
理论分子量	
实测分子量	15-74KDa
形式	Liquid
保存条件	Store at -20°C. Avoid freeze / thaw cycles. Buffer: PBS with 0.01% thiomersal,50% glycerol,pH7.3.
偶联物	Unconjugated
阳性对照	HeLa,MCF7,NIH/3T3,C6
细胞定位	
纯化	Affinity purification

抗原信息

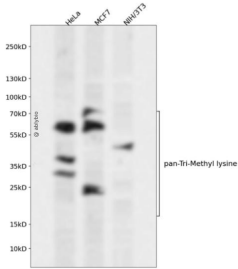
抗原信息	A synthetic peptide corresponding to a sequence containing Tri-methylated K.
序列	

靶点信息

研究背景	Methylation of lysine residues is a common regulatory post-translational modification (PTM) that results in the mono-, di-, or tri-methylation of lysine at ϵ -amine groups by protein lysine methyltransferases (PKMTs). The post-translational ϵ -amino lysine methylated proteins is an important reversible modification which plays a vital role in the regulation of many cellular processes including chromatin dynamics and gene transcription. Methylation of lysine residues is modulated by specific counteractive enzymes including lysine methylases (KMTs) and demethylases (KDMs). Lysine trimethylation occurs in both histones and non-histone substrates. It has become promising targets for discovery of anti-cancer drugs.
------	-------------------------------------------------------------------------------------------------------------------------------------------------------------------------------------------------------------------------------------------------------------------------------------------------------------------------------------------------------------------------------------------------------------------------------------------------------------------------------------------------------------------------------------------------------------------------------------------------------------------------------------------------------------------------------------------------------------------------------------------------------------------

基因ID	
基因名	
Swiss	
别名	

产品验证



Western blot analysis of pan-Tri-Methyl lysine expressed in HeLa, MCF7, NIH/3T3 using pan-Tri-Methyl lysine Rabbit pAb at 1:1000. Secondary antibody: HRP Goat Anti-Rabbit IgG (H+L) at 1:5000. Lysates/proteins: 30ug per lane. Blocking buffer: 5% non-fat dry milk in TBST. Detection: ECL Enhanced Kit. Exposure time: 120s.

实验步骤

访问官网浏览详情: www.ablybio.cn