

— ABLYBIO, Help Your Research



Phospho-SHC1-Y427 Rabbit pAb

货号: **AYP22354**

产品信息

反应	Human,Mouse
宿主	Rabbit
克隆性	Polyclonal
预测反应	
应用	WB
推荐浓度	WB: 1:500 - 1:1000
理论分子量	
实测分子量	50KDa/55KDa
形式	Liquid
保存条件	Store at -20°C. Avoid freeze / thaw cycles. Buffer: PBS with 0.01% thiomersal,50% glycerol,pH7.3.
偶联物	Unconjugated
阳性对照	A-431
细胞定位	cytosol,mitochondrial matrix,plasma membrane
纯化	Affinity purification

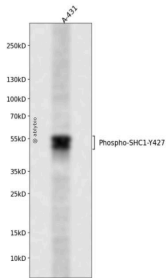
抗原信息

抗原信息	A synthetic phosphorylated peptide around Y427 of human SHC1 (NP_892113.4).
------	---

靶点信息

研究背景	This gene encodes three main isoforms that differ in activities and subcellular location. While all three are adapter proteins in signal transduction pathways, the longest (p66Shc) may be involved in regulating life span and the effects of reactive oxygen species. The other two isoforms, p52Shc and p46Shc, link activated receptor tyrosine kinases to the Ras pathway by recruitment of the GRB2/SOS complex. p66Shc is not involved in Ras activation. Unlike the other two isoforms, p46Shc is targeted to the mitochondrial matrix. Several transcript variants encoding different isoforms have been found for this gene.
基因ID	6464
基因名	SHC1
Swiss	P29353 (https://www.uniprot.org/uniprotkb/P29353/entry)
别名	SHC,SHCA,SHC1,Phospho-SHC1-Y427 Rabbit pAb,SHC-transforming protein 3,SHC-transforming protein A, Src homology 2 domain-containing-transforming protein C1

产品验证



Western blot analysis of Phospho-SHC1-Y427 expressed in A-431 using Phospho-SHC1-Y427 Rabbit pAb at 1:1000. Secondary antibody: HRP Goat Anti-Rabbit IgG (H+L) at 1:5000. Lysates/proteins: 30ug per lane. Blocking buffer: 5% non-fat dry milk in TBST. Detection: ECL Enhanced Kit. Exposure time: 120s.

实验步骤

访问官网浏览详情: www.ablybio.cn (<https://www.ablybio.cn/www.ablybio.cn>)