

COL16A1 Rabbit pAb

货号: AYP22206

产品信息

反应	Human,Mouse,Rat
宿主	Rabbit
克隆性	Polyclonal
预测反应	
应用	WB
推荐浓度	WB: 1:500 - 1:2000
理论分子量	
实测分子量	145kDa
形式	Liquid
保存条件	Store at -20°C. Avoid freeze / thaw cycles. Buffer: PBS with 0.01% thiomersal,50% glycerol,pH7.3.
偶联物	Unconjugated
阳性对照	PC-3,Mouse kidney,Mouse heart
细胞定位	endoplasmic reticulum lumen,extracellular region,extracellular space
纯化	Affinity purification

抗原信息

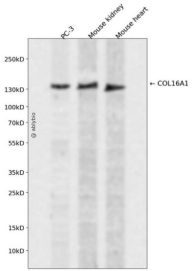
抗原信息	A synthetic peptide corresponding to a sequence within amino acids 1000-1100 of human COL16A1 (NP_01847.3).
序列	PRAEEARGDNSEGDPGCVGSPGLPGPPGLPGQRGEEGPPGMRGSPGPPGPIGPPGFPGAVGSPGLPGLQGERGLTGLT GDKGEPGPPGQPGYPGATGPPGL

靶点信息

研究背景	
基因ID	1307
基因名	COL16A1

Swiss	Q07092
别名	

产品验证



Western blot analysis of COL16A1 expressed in PC-3, Mouse kidney, Mouse heart using COL16A1 Rabbit pAb at 1:1000. Secondary antibody: HRP Goat Anti-Rabbit IgG (H+L) at 1:5000. Lysates/proteins: 30ug per lane. Blocking buffer: 5% non-fat dry milk in TBST. Detection: ECL Enhanced Kit. Exposure time: 12 0s.

实验步骤

访问官网浏览详情: www.ablybio.cn