

Pan Cadherin Rabbit pAb

货号: **AYP22197**

产品信息

反应	Human,Mouse,Rat
宿主	Rabbit
克隆性	Polyclonal
预测反应	
应用	WB IP
推荐浓度	WB: 1:500 - 1:2000 IP: 1:1000 - 1:5000
理论分子量	
实测分子量	135kDa
形式	Liquid
保存条件	Store at -20°C. Avoid freeze / thaw cycles. Buffer: PBS with 0.01% thiomersal,50% glycerol,pH7.3.
偶联物	Unconjugated
阳性对照	PC-3,A-431,Mouse brain,Rat brain
细胞定位	actin cytoskeleton,adherens junction,apical junction complex,cell junction,cytoplasm,cytoplasmic side of plasma membrane,endosome,extracellular exosome,extracellular region,flotillin complex,glutamatergic synapse,lateral plasma membrane,perinuclear region of cytoplasm,plasma membrane,trans-Golgi network
纯化	Affinity purification

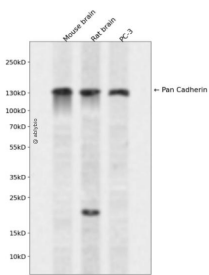
抗原信息

抗原信息	A synthetic peptide corresponding to a sequence within amino acids 800-882 of human pan-cadherin (NP_004351.1).
序列	RPANPDEIGNFIDENLKAADTDPTAPPYDSSLVFDYEGSGSEAASSLNSESDDKQDYDYLNWGNRFKKLADMYGGGEDD

靶点信息

研究背景	Cadherin is one of a class of integral-membrane glycoproteins that are involved in cell to cell attachment for preserving the integrity of all solid tissues. Cadherins have three major regions: the Ca ²⁺ -dependent extracellular region that mediates adhesion (cadherin to cadherin) for cell to cell binding; the transmembrane region; and the cytoplasmic region that extends into the cell and interacts with catenins, which in turn are linked to the actin of the cytoskeleton. Cadherins are differentially expressed during development and in adult organs. Since many cell types express multiple cadherin subclasses simultaneously (the combination differs with cell type), it can be inferred that the adhesion properties of individual cells are thus governed by varying the combinations of cadherins. Altered expression of cadherins are involved in invasion and metastasis of tumour cells. The classical cadherins (e.g. E-, N-, and P-cadherins) are the most common family members. E-cadherin (also known as uvomorulin) is concentrated in the belt desmosome in epithelial cells; N-cadherin is found in nerve, muscle, and lens cells and helps maintain the integrity of neuronal aggregates; P-cadherin is expressed in placental and epidermal cells.
基因ID	999,1000,1001,1002
基因名	CDH1,CDH2,CDH3,CDH4
Swiss	P12830,P19022,P22223,P55283
别名	

产品验证



Western blot analysis of Pan Cadherin expressed in Mouse brain, Rat brain, PC-3 using Pan Cadherin Rabbit pAb at 1:1000. Secondary antibody: HRP Goat Anti-Rabbit IgG (H+L) at 1:5000. Lysates/protein: 30ug per lane. Blocking buffer: 5% non-fat dry milk in TBST. Detection: ECL Enhanced Kit. Exposure time: 120s.

实验步骤

访问官网浏览详情: www.ablybio.cn