

PYM1 Rabbit pAb

货号: **AYP21948**

产品信息

反应	Human,Mouse,Rat
宿主	Rabbit
克隆性	Polyclonal
预测反应	
应用	WB IF/ICC
推荐浓度	WB: 1:500 - 1:2000 IF/ICC: 1:50 - 1:200
理论分子量	
实测分子量	23kDa
形式	Liquid
保存条件	Store at -20°C. Avoid freeze / thaw cycles. Buffer: PBS with 0.01% thiomersal,50% glycerol,pH7.3.
偶联物	Unconjugated
阳性对照	Mouse thymus,Mouse spleen
细胞定位	cell junction,cytoplasm,cytosol,nucleolus,nucleoplasm
纯化	Affinity purification

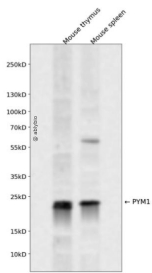
抗原信息

抗原信息	Recombinant fusion protein containing a sequence corresponding to amino acids 1-204 of human PYM1 (NP_115721.1).
序列	MEAAGSPAATETGKYIASTQRPDGTWRKQRRVKEGYVPQEEVPVYENKYVKFFKSKPELPPGLSPEATAPVTPSRPEGGEP GLSKTAKRNLKRKEKRRQQQEKGEAEALSRTLDKVSLEETAQLPSAPQGSRAAPTAASDQPDSAATTEKAKKIKNLKKKLR QVEELQRIQAGEVSPSKEQLEKLARRRALEEELEDLELGL

靶点信息

研究背景	Key regulator of the exon junction complex (EJC, a multiprotein complex that associates immediately upstream of the exon-exon junction on mRNAs and serves as a positional landmark for the intron exon structure of genes and directs post-transcriptional processes in the cytoplasm such as mRNA export, nonsense-mediated mRNA decay (NMD) or translation. Acts as an EJC disassembly factor, allowing translation-dependent EJC removal and recycling by disrupting mature EJC from spliced mRNAs. Its association with the 40S ribosomal subunit probably prevents a translation-independent disassembly of the EJC from spliced mRNAs, by restricting its activity to mRNAs that have been translated. Interferes with NMD and enhances translation of spliced mRNAs, probably by antagonizing EJC functions. May bind RNA; the relevance of RNA-binding remains unclear in vivo, RNA-binding was detected by PubMed:14968132, while PubMed:19410547 did not detect RNA-binding activity independently of the EJC.
基因ID	84305
基因名	PYM1
Swiss	Q9BRP8
别名	PYM; WIBG

产品验证



Western blot analysis of PYM1 expressed in Mouse thymus, Mouse spleen using PYM1 Rabbit pAb at 1:1000. Secondary antibody: HRP Goat Anti-Rabbit IgG (H+L) at 1:5000. Lysates/proteins: 30ug per lane. Blocking buffer: 5% non-fat dry milk in TBST. Detection: ECL Enhanced Kit. Exposure time: 120s.

实验步骤

访问官网浏览详情: www.ablybio.cn