

Siglec-15 Rabbit pAb

货号: **AYP21942**

产品信息

反应	Human,Rat
宿主	Rabbit
克隆性	Polyclonal
预测反应	
应用	WB IHC IF/ICC
推荐浓度	WB: 1:500 - 1:1000 IHC: 1:50 - 1:200 IF/ICC: 1:50 - 1:200
理论分子量	
实测分子量	36KDa
形式	Liquid
保存条件	Store at -20°C. Avoid freeze / thaw cycles. Buffer: PBS with 0.01% thiomersal,50% glycerol,pH7.3.
偶联物	Unconjugated
阳性对照	HUVEC,Rat brain
细胞定位	plasma membrane
纯化	Affinity purification

抗原信息

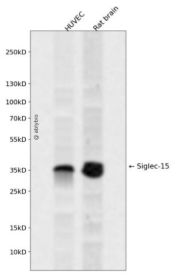
抗原信息	Recombinant fusion protein containing a sequence corresponding to amino acids 20-263 of human Siglec-15 (NP_998767.1).
序列	FVRTKIDTTENLLNTEVHSSPAQRWSMQVPPEVSAEAGDAAVLPCTFTHPHRHYDGPLTAIWRAGEPYAGPQVFRCAAAR GSELCQTALSLHGRFRLLGNPRRNDLSLRVERLALADDRRYFCRVEFAGDVHDRYESRHGVRLHVTAAPRIVNISVLPSPA HAFRALCTAEGEPPPALAWSGPALGNSLAAVRSPREGHGLVTAELPALTHDGRYTCTAANSLGRSEASVYLFRFHGASG AST

靶点信息

研究背景	SIGLEC15 (Sialic Acid Binding Ig Like Lectin 15) is a Protein Coding gene. Diseases associated with SIGLEC15 include Osteoporosis, Juvenile and Osteoporosis. Among its related pathways are Innate Immune System and RET signaling. An important paralog of this gene is SIGLEC1.
------	--

基因ID	284266
基因名	SIGLEC15
Swiss	Q6ZMC9
别名	CD33L3; HsT1361; SIGLEC-15

产品验证



Western blot analysis of Siglec-15 expressed in HUVEC, Rat brain using Siglec-15 Rabbit pAb at 1:1000. Secondary antibody: HRP Goat Anti-Rabbit IgG (H+L) at 1:5000. Lysates/proteins: 30ug per lane. Blocking buffer: 5% non-fat dry milk in TBST. Detection: ECL Enhanced Kit. Exposure time: 120s.

实验步骤

访问官网浏览详情: www.ablybio.cn