

PIGO Rabbit pAb

货号: **AYP21807**

产品信息

反应	Human,Mouse
宿主	Rabbit
克隆性	Polyclonal
预测反应	
应用	WB
推荐浓度	WB: 1:500 - 1:2000
理论分子量	73kDa/118kDa
实测分子量	119kDa
形式	Liquid
保存条件	Store at -20°C. Avoid freeze / thaw cycles. Buffer: PBS with 0.01% thiomersal,50% glycerol,pH7.3.
偶联物	Unconjugated
阳性对照	HeLa,22Rv1,Mouse uterus,Mouse spleen
细胞定位	Endoplasmic reticulum membrane,Multi-pass membrane protein
纯化	Affinity purification

抗原信息

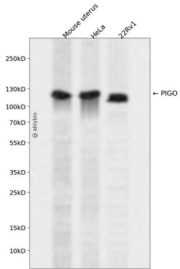
抗原信息	A synthetic peptide corresponding to a sequence within amino acids 950-1050 of human PIGO (NP_116023.2).
序列	FAVGCPLLLLWPFLLCESQGLRKRQPPGNEADARVRPEEEEEPLMEMRLRDAPQHFYAALLQLGLKYLFIILGIQILACALAASILRRHLMVWVKVFAPKFIF

靶点信息

研究背景	This gene encodes a protein that is involved in glycosylphosphatidylinositol (GPI)-anchor biosynthesis. The GPI-anchor is a glycolipid which contains three mannose molecules in its core backbone. The GPI-anchor is found on many blood cells and serves to anchor proteins to the cell surface. This protein is involved in the transfer of ethanolaminephosphate (EtNP) to the third mannose in GPI. At least three alternatively spliced transcripts encoding two distinct isoforms have been found for this gene.
基因ID	84720

基因名	PIGO
Swiss	Q8TEQ8
别名	PIGO; HPMRS2; GPI ethanolamine phosphate transferase 3

产品验证



Western blot analysis of PIGO expressed in Mouse uterus, HeLa, 22Rv1 using PIGO Rabbit pAb at 1:1000. Secondary antibody: HRP Goat Anti-Rabbit IgG (H+L) at 1:5000. Lysates/proteins: 30ug per lane. Blocking buffer: 5% non-fat dry milk in TBST. Detection: ECL Enhanced Kit. Exposure time: 120s.

实验步骤

访问官网浏览详情: www.ablybio.cn