

KLF11 Rabbit pAb

货号: AYP21760

产品信息

反应	Mouse,Rat
宿主	Rabbit
克隆性	Polyclonal
预测反应	
应用	WB
推荐浓度	WB: 1:500 - 1:2000
理论分子量	
实测分子量	55kDa
形式	Liquid
保存条件	Store at -20°C. Avoid freeze / thaw cycles. Buffer: PBS with 0.01% thiomersal,50% glycerol,pH7.3.
偶联物	Unconjugated
阳性对照	mouse thymus,mouse brain,rat lung
细胞定位	cytosol,focal adhesion,nuclear body,nucleoplasm,nucleus
纯化	Affinity purification

抗原信息

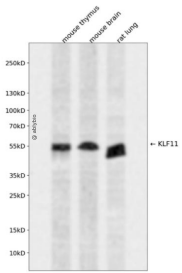
抗原信息	Recombinant fusion protein containing a sequence corresponding to amino acids 13-107 of human KLF11 (NP_003588.1).
序列	RAVDIMDICESILERKRHDSERSTCSILEQTDMEAVEALVCMSSWGQRSQKGDLLRIRPLTPVSDSGDVTTTVHMDAATPE LPKDFHSLSTLCIT

靶点信息

研究背景	
基因ID	8462
基因名	KLF11

Swiss	O14901
别名	

产品验证



Western blot analysis of KLF11 expressed in mouse thymus, mouse brain, rat lung using KLF11 Rabbit pAb at 1:1000. Secondary antibody: HRP Goat Anti-Rabbit IgG (H+L) at 1:5000. Lysates/proteins: 30ug per lane. Blocking buffer: 5% non-fat dry milk in TBST. Detection: ECL Enhanced Kit. Exposure time: 120s.

实验步骤

访问官网浏览详情: www.ablybio.cn