

Phospho-TH-S40 Rabbit pAb

货号: **AYP21683**

产品信息

反应	Rat
宿主	Rabbit
克隆性	Polyclonal
预测反应	
应用	WB
推荐浓度	WB: 1:500 - 1:2000
理论分子量	44kDa/45kDa/55kDa/56kDa/58kDa
实测分子量	44kDa/45kDa/55kDa/56kDa/58kDa
形式	Liquid
保存条件	Store at -20°C. Avoid freeze / thaw cycles. Buffer: PBS with 0.01% thiomersal, 50% glycerol, pH7.3.
偶联物	Unconjugated
阳性对照	
细胞定位	axon, cytoplasm, cytoplasmic side of plasma membrane, cytoplasmic vesicle, cytosol, dendrite, mitochondrion, neuron projection, nucleus, perikaryon, perinuclear region of cytoplasm, smooth endoplasmic reticulum, synaptic vesicle, terminal bouton
纯化	Affinity purification

抗原信息

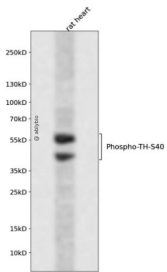
抗原信息	A synthetic phosphorylated peptide around S40 of human Tyrosine Hydroxylase (NP_000351.2).
序列	RQSLI

靶点信息

研究背景	The protein encoded by this gene is involved in the conversion of tyrosine to dopamine. It is the rate-limiting enzyme in the synthesis of catecholamines, hence plays a key role in the physiology of adrenergic neurons. Mutations in this gene have been associated with autosomal recessive Segawa syndrome. Alternatively spliced transcript variants encoding different isoforms have been noted for this gene. [provided by RefSeq, Jul 2008]
基因ID	7054

基因名	TH
Swiss	P07101
别名	DYT14;DYT5b;TYH;TH

产品验证



Western blot analysis of Phospho-TH-S40 expressed in rat heart using Phospho-TH-S40 Rabbit pAb at 1:1000. Secondary antibody: HRP Goat Anti-Rabbit IgG (H+L) at 1:5000. Lysates/proteins: 30ug per lane. Blocking buffer: 5% non-fat dry milk in TBST. Detection: ECL Enhanced Kit. Exposure time: 120s.

实验步骤

访问官网浏览详情: www.ablybio.cn