

# ADH1A/ADH1B/ADH1C Rabbit pAb

货号: AYP21675

## 产品信息

反应	Human,Mouse,Rat
宿主	Rabbit
克隆性	Polyclonal
预测反应	
应用	WB IF/ICC
推荐浓度	<b>WB:</b> 1:500 - 1:2000 <b>IF/ICC:</b> 1:50 - 1:200
理论分子量	
实测分子量	40kDa
形式	Liquid
保存条件	Store at -20°C. Avoid freeze / thaw cycles. Buffer: PBS with 0.01% thiomersal,50% glycerol,pH7.3.
偶联物	Unconjugated
阳性对照	Mouse lung
细胞定位	cytosol,nucleoplasm,plasma membrane
纯化	Affinity purification

## 抗原信息

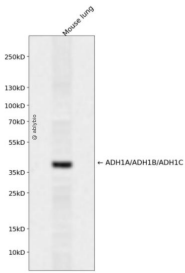
抗原信息	A synthetic peptide corresponding to a sequence within amino acids 280 to the C-terminus of human ADH 1A/ADH1B/ADH1C (NP_000659.2).
序列	LLCCHEACGTSVIVGVPPASQNLSINPMLLLTGRTWKGAVYGGFKSKEGIPKLVADFMAKKFSLDALITHVLPFEKINEGFD LLHSGKSIRTVLTF

## 靶点信息

研究背景	Alcohol dehydrogenase,consisting of several homo- and heterodimers of alpha, beta, and gamma subunit s, exhibits high activity for ethanol oxidation and plays a major role in ethanol catabolism.Members of this enzyme family metabolize a wide variety of substrates, including ethanol, retinol, other aliphatic alcohols, hydroxysteroids, and lipid peroxidation products. Three genes encoding alpha, beta and gamma subunits are tandemly organized in a genomic segment as a gene cluster.
------	---

基因ID	124,125,126
基因名	ADH1A,ADH1B,ADH1C
Swiss	P07327,P00325,P00326
别名	ADH1A/ADH1B/ADH1C

## 产品验证



Western blot analysis of ADH1A/ADH1B/ADH1C expressed in Mouse lung using ADH1A/ADH1B/ADH1C R abbit pAb at 1:1000. Secondary antibody: HRP Goat Anti-Rabbit IgG (H+L) at 1:5000. Lysates/proteins: 30ug per lane. Blocking buffer: 5% non-fat dry milk in TBST. Detection: ECL Enhanced Kit. Exposure time: 120s.

## 实验步骤

访问官网浏览详情: [www.ablybio.cn](http://www.ablybio.cn)