

Phospho- α -Synuclein-Y133 Rabbit pAb

货号: AYP21668

产品信息

反应	Human,Mouse
宿主	Rabbit
克隆性	Polyclonal
预测反应	
应用	WB
推荐浓度	WB: 1:500 - 1:2000
理论分子量	14kDa
实测分子量	18KDa
形式	Liquid
保存条件	Store at -20°C. Avoid freeze / thaw cycles. Buffer: PBS with 0.01% thiomersal,50% glycerol,pH7.3.
偶联物	Unconjugated
阳性对照	Jurkat,NIH/3T3
细胞定位	Cell junction,Cytoplasm,Membrane,Nucleus,Secreted,cytosol,synapse
纯化	Affinity purification

抗原信息

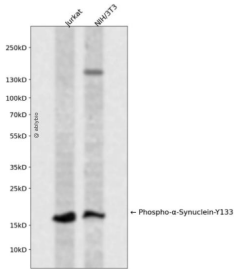
抗原信息	A synthetic phosphorylated peptide around Y133 of human alpha-Synuclein (NP_000336.1).
序列	EGYQD

靶点信息

研究背景	Alpha-synuclein is a member of the synuclein family, which also includes beta- and gamma-synuclein. Synucleins are abundantly expressed in the brain and alpha- and beta-synuclein inhibit phospholipase D2 selectively. SNCA may serve to integrate presynaptic signaling and membrane trafficking. Defects in SNCA have been implicated in the pathogenesis of Parkinson disease. SNCA peptides are a major component of amyloid plaques in the brains of patients with Alzheimer's disease. Alternatively spliced transcripts encoding different isoforms have been identified for this gene.
基因ID	6622

基因名	SNCA
Swiss	P37840
别名	PD1;NACP;PARK1;PARK4;SNCA

产品验证



Western blot analysis of Phospho- α -Synuclein-Y133 expressed in Jurkat,NIH/3T3 using Phospho- α -Synuclein-Y133 Rabbit pAb at 1:1000. Secondary antibody: HRP Goat Anti-Rabbit IgG (H+L) at 1:50 00. Lysates/proteins: 30ug per lane. Blocking buffer: 5% non-fat dry milk in TBST. Detection: ECL Enhanced Kit. Exposure time: 120s.

实验步骤

访问官网浏览详情: www.ablybio.cn