

WBP2NL Rabbit pAb

货号: **AYP21667**

产品信息

反应	Mouse,Rat
宿主	Rabbit
克隆性	Polyclonal
预测反应	
应用	WB IF/ICC
推荐浓度	WB: 1:500 - 1:2000 IF/ICC: 1:50 - 1:200
理论分子量	
实测分子量	32kDa
形式	Liquid
保存条件	Store at -20°C. Avoid freeze / thaw cycles. Buffer: PBS with 0.01% thiomersal,50% glycerol,pH7.3.
偶联物	Unconjugated
阳性对照	Rat spleen
细胞定位	nucleus,perinuclear theca,sperm flagellum
纯化	Affinity purification

抗原信息

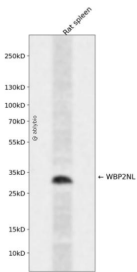
抗原信息	Recombinant fusion protein containing a sequence corresponding to amino acids 1-120 of human WBP2NL (NP_689826.2).
序列	MAVNQSHTENRRGALIPNGESLLKRSPNVELSFPQRSEGSNVFSGRKTGTLFLTYSYRVIFITSCSISDPMLSFMMPPFDLMTNLTVEQPVFAANFIKGTIQAAPYGGWEGQATFKLVFRNG

靶点信息

研究背景	WBP2NL is a sperm-specific WW domain-binding protein that promotes meiotic resumption and pronuclear development during oocyte fertilization (Wu et al., 2007 [PubMed 17289678]).[supplied by OMIM, Mar 2008]
基因ID	164684

基因名	WBP2NL
Swiss	Q6ICG8
别名	GRAMD7;PAWP;WBP2NL

产品验证



Western blot analysis of WBP2NL expressed in Rat spleen using WBP2NL Rabbit pAb at 1:1000. Secondary antibody: HRP Goat Anti-Rabbit IgG (H+L) at 1:5000. Lysates/proteins: 30ug per lane. Blocking buffer: 5% non-fat dry milk in TBST. Detection: ECL Enhanced Kit. Exposure time: 120s.

实验步骤

访问官网浏览详情: www.ablybio.cn