

GTSF1 Rabbit pAb

货号: **AYP21660**

产品信息

反应	Human,Mouse,Rat
宿主	Rabbit
克隆性	Polyclonal
预测反应	
应用	WB IF/ICC
推荐浓度	WB: 1:500 - 1:2000 IF/ICC: 1:50 - 1:200
理论分子量	
实测分子量	19kDa
形式	Liquid
保存条件	Store at -20°C. Avoid freeze / thaw cycles. Buffer: PBS with 0.01% thiomersal,50% glycerol,pH7.3.
偶联物	Unconjugated
阳性对照	Mouse brain,Rat brain
细胞定位	cytoplasm
纯化	Affinity purification

抗原信息

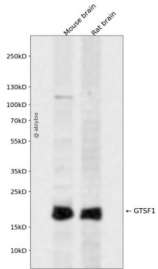
抗原信息	Recombinant fusion protein containing a sequence corresponding to amino acids 1-167 of human GTSF1 (NP_653195.2).
序列	MEETYDSDLDEKLLQCPYDKNHQIRACRFYHLIKCRKNHPDVASKLATCPFNARHQVPRAEISHHISSCDDRSCIEQDVV NQTRSLRQETLAESTWQCPCDEDWDKDLWEQTSTPFVWGTHYSDNNSPASIVTEHKNNLASGMRVPSLPYVLPW KNNGNAQ

靶点信息

研究背景	Required for spermatogenesis and is involved in the suppression of retrotransposon transcription in male germ cells.
基因ID	121355

基因名	GTSF1
Swiss	Q8WW33
别名	FAM112B;GTSF1

产品验证



Western blot analysis of GTSF1 expressed in Mouse brain,Rat brain using GTSF1 Rabbit pAb at 1:1000. Secondary antibody: HRP Goat Anti-Rabbit IgG (H+L) at 1:5000. Lysates/proteins: 30ug per lane. Blocking buffer: 5% non-fat dry milk in TBST. Detection: ECL Enhanced Kit. Exposure time: 120s.

实验步骤

访问官网浏览详情: www.ablybio.cn