

SLC26A9 Rabbit pAb

货号: AYP21659

产品信息

反应	Human,Mouse
宿主	Rabbit
克隆性	Polyclonal
预测反应	
应用	WB
推荐浓度	WB: 1:500 - 1:2000
理论分子量	
实测分子量	87kDa
形式	Liquid
保存条件	Store at -20°C. Avoid freeze / thaw cycles. Buffer: PBS with 0.01% thiomersal,50% glycerol,pH7.3.
偶联物	Unconjugated
阳性对照	NCI-H460,Mouse stomach
细胞定位	apical plasma membrane,cell surface,extracellular exosome,plasma membrane
纯化	Affinity purification

抗原信息

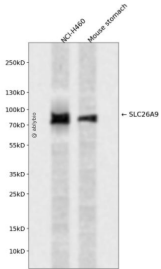
抗原信息	Recombinant fusion protein containing a sequence corresponding to amino acids 500-660 of human SLC26A9 (NP_443166.1).
序列	RNGYALAQVMDTDIYVNPKTYNRAQDIQGKIITYCSPLYFANSEIFRQKVIKTGMDPQKVLLAKQKYLKKQEKRRMRPTQ QRRSLFMKTKTVSLQELQQDFENAPPTDPNNNQTPANGTSVSYITFSPDSSSPAQSEPPASAEAPGEPDMLASVPPFV

靶点信息

研究背景	
基因ID	115019
基因名	SLC26A9

Swiss	Q7LBE3
别名	SLC26A9

产品验证



Western blot analysis of SLC26A9 expressed in NCI-H460, Mouse stomach using SLC26A9 Rabbit pAb at 1:1000. Secondary antibody: HRP Goat Anti-Rabbit IgG (H+L) at 1:5000. Lysates/proteins: 30ug per lane. Blocking buffer: 5% non-fat dry milk in TBST. Detection: ECL Enhanced Kit. Exposure time: 120s.

实验步骤

访问官网浏览详情: www.ablybio.cn