

LMAN2L Rabbit pAb

货号: AYP21655

产品信息

反应	Human,Mouse,Rat
宿主	Rabbit
克隆性	Polyclonal
预测反应	
应用	WB IF/ICC
推荐浓度	WB: 1:500 - 1:1000 IF/ICC: 1:50 - 1:200
理论分子量	
实测分子量	40KDa
形式	Liquid
保存条件	Store at -20°C. Avoid freeze / thaw cycles. Buffer: PBS with 0.05% proclin300,50% glycerol,pH7.3.
偶联物	Unconjugated
阳性对照	HeLa
细胞定位	COPII-coated ER to Golgi transport vesicle,endoplasmic reticulum-Golgi intermediate compartment,Golgi apparatus
纯化	Affinity purification

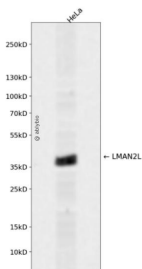
抗原信息

抗原信息	Recombinant fusion protein containing a sequence corresponding to amino acids 189-348 of human LMAN2L (NP_110432.1).
序列	ERDGRPTELGGCTAIVRNLYHYDTFLVIRYVKRHLTIMMDIDGKHEWRDCIEVPGVRLPRGYFSGTSSITGDLSDNHDVISLKL FELTVERTPEEEKLHRDVF LPSVDNMKLPENTAPLPLSGLALFLIVFFSLVFSVFAIVIGIILYNKWQEQSRKRFY

靶点信息

研究背景	This gene encodes a protein belonging to the L-type lectin group of type 1 membrane proteins, which function in the mammalian early secretory pathway. These proteins contain luminal carbohydrate recognition domains, which display homology to leguminous lectins. Unlike other proteins of the group, which cycle in the early secretory pathway and are predominantly associated with post endoplasmic reticulum membranes, the protein encoded by this gene is a non-cycling resident protein of the ER, where it functions as a cargo receptor for glycoproteins. It is proposed to regulate exchange of folded proteins for transport to the Golgi and exchange of misfolded glycoproteins for transport to the ubiquitin-proteasome pathway. [provided by RefSeq, Apr 2016]
基因ID	81562
基因名	LMAN2L
Swiss	Q9H0V9
别名	MRT52;VIPL;LMAN2L

产品验证



Western blot analysis of LMAN2L expressed in HeLa using LMAN2L Rabbit pAb at 1:1000. Secondary antibody: HRP Goat Anti-Rabbit IgG (H+L) at 1:5000. Lysates/proteins: 30ug per lane. Blocking buffer: 5% non-fat dry milk in TBST. Detection: ECL Enhanced Kit. Exposure time: 120s.

实验步骤

访问官网浏览详情: www.ablybio.cn