

ABTB1 Rabbit pAb

货号: AYP21652

产品信息

反应	Mouse,Rat
宿主	Rabbit
克隆性	Polyclonal
预测反应	
应用	WB
推荐浓度	WB: 1:500 - 1:2000
理论分子量	37kDa/44kDa/51kDa/53kDa
实测分子量	55kDa
形式	Liquid
保存条件	Store at -20°C. Avoid freeze / thaw cycles. Buffer: PBS with 0.01% thiomersal,50% glycerol,pH7.3.
偶联物	Unconjugated
阳性对照	Mouse skeletal muscle,Rat skeletal muscle
细胞定位	cytoplasm,cytosol,nucleolus,plasma membrane
纯化	Affinity purification

抗原信息

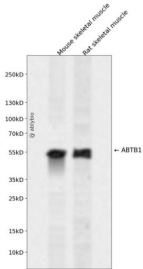
抗原信息	Recombinant fusion protein containing a sequence corresponding to amino acids 1-140 of human ABTB1 (NP_742024.1).
序列	MDTSDLFASCRKGDVGRVRYLLEQRDVEVNVRDKWDSTPLYACLGGHEELVLYLLANGARCEANTFDGERCLYGALSD PIRRALRDYKQVTASCRRRDYDDFLQRLLEQGIHSDVVFVHGKPFVHRCVVGARSAYF

靶点信息

研究背景	This gene encodes a protein with an ankyrin repeat region and two BTB/POZ domains, which are thought to be involved in protein-protein interactions. Expression of this gene is activated by the phosphatase and tensin homolog, a tumor suppressor. Alternate splicing results in three transcript variants.
基因ID	80325

基因名	ABTB1
Swiss	Q969K4
别名	BPOZ;BTB3;BTBD21;EF1ABP;PP2259;ABTB1

产品验证



Western blot analysis of ABTB1 expressed in Mouse skeletal muscle,Rat skeletal muscle using ABTB1 Rabbit pAb at 1:1000. Secondary antibody: HRP Goat Anti-Rabbit IgG (H+L) at 1:5000. Lysates/proteins: 30ug per lane. Blocking buffer: 5% non-fat dry milk in TBST. Detection: ECL Enhanced Kit. Exposure time: 120s.

实验步骤

访问官网浏览详情: www.ablybio.cn