

# SLTM Rabbit pAb

货号: **AYP21650**

## 产品信息

反应	Mouse
宿主	Rabbit
克隆性	Polyclonal
预测反应	
应用	WB
推荐浓度	<b>WB:</b> 1:500 - 1:2000
理论分子量	71kDa/117kDa
实测分子量	117kDa
形式	Liquid
保存条件	Store at -20°C. Avoid freeze / thaw cycles. Buffer: PBS with 0.01% thiomersal, 50% glycerol, pH7.3.
偶联物	Unconjugated
阳性对照	Mouse brain
细胞定位	nuclear body, nucleoplasm, nucleus
纯化	Affinity purification

## 抗原信息

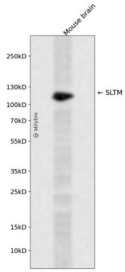
抗原信息	A synthetic peptide corresponding to a sequence within amino acids 900-1000 of human SLTM (NP_07903 1.2).
序列	RPERSGREVSGHSGVIRGAPPGNRSSASGYGSREGDRGVITDRGGGSQHYPEERHVVERHGRDTSRKEWHGPPSQGP SYHDTRRMGDGRAGAGMITQHSSN

## 靶点信息

研究背景	When overexpressed, acts as a general inhibitor of transcription that eventually leads to apoptosis.
基因ID	79811
基因名	SLTM

Swiss	Q9NWH9
别名	Met;SLTM

## 产品验证



Western blot analysis of SLTM expressed in Mouse brain using SLTM Rabbit pAb at 1:1000. Secondary anti body: HRP Goat Anti-Rabbit IgG (H+L) at 1:5000. Lysates/proteins: 30ug per lane. Blocking buffer: 5% no n-fat dry milk in TBST. Detection: ECL Enhanced Kit. Exposure time: 120s.

## 实验步骤

访问官网浏览详情: [www.ablybio.cn](http://www.ablybio.cn)