

— ABLYBIO, Help Your Research



# SERINC1 Rabbit pAb

货号: **AYP21643**

## 产品信息

反应	Human,Mouse,Rat
宿主	Rabbit
克隆性	Polyclonal
预测反应	
应用	WB IHC
推荐浓度	<b>WB:</b> 1:500 - 1:2000 <b>IHC:</b> 1:50 - 1:200
理论分子量	
实测分子量	50kDa
形式	Liquid
保存条件	Store at -20°C. Avoid freeze / thaw cycles. Buffer: PBS with 0.01% thiomersal,50% glycerol,pH7.3.
偶联物	Unconjugated
阳性对照	U-87MG,HepG2,HeLa
细胞定位	plasma membrane
纯化	Affinity purification

## 抗原信息

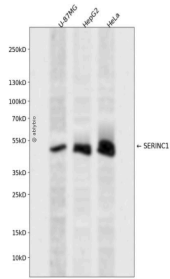
抗原信息	A synthetic peptide corresponding to a sequence within amino acids 350-453 of human SERINC1 (NP_065806.1).
------	--

## 靶点信息

研究背景	Enhances the incorporation of serine into phosphatidylserine and sphingolipids.
------	---

基因ID	57515
基因名	SERINC1
Swiss	Q9NRX5 ( <a href="https://www.uniprot.org/uniprotkb/Q9NRX5/entry">https://www.uniprot.org/uniprotkb/Q9NRX5/entry</a> )
别名	TDE1L,TDE2,TMS-2,TMS2,SERINC1,SERINC1 Rabbit pAb,Tumor differentially expressed protein 1-like,Tumor differentially expressed protein 2,KIAA1253

## 产品验证



Western blot analysis of SERINC1 expressed in U-87MG,HepG2,HeLa using SERINC1 Rabbit pAb at 1:1000. Secondary antibody: HRP Goat Anti-Rabbit IgG (H+L) at 1:5000. Lysates/proteins: 30ug per lane. Blocking buffer: 5% non-fat dry milk in TBST. Detection: ECL Enhanced Kit. Exposure time: 120s.

## 实验步骤

访问官网浏览详情: [www.ablybio.cn](http://www.ablybio.cn) (<https://www.ablybio.cn/www.ablybio.cn>)