

# JPH1 Rabbit pAb

货号: **AYP21641**

## 产品信息

反应	Mouse
宿主	Rabbit
克隆性	Polyclonal
预测反应	
应用	WB
推荐浓度	<b>WB:</b> 1:500 - 1:2000
理论分子量	
实测分子量	62kDa
形式	Liquid
保存条件	Store at -20°C. Avoid freeze / thaw cycles. Buffer: PBS with 0.01% thiomersal, 50% glycerol, pH7.3.
偶联物	Unconjugated
阳性对照	Mouse skeletal muscle
细胞定位	junctional membrane complex, nucleoplasm, plasma membrane, sarcoplasmic reticulum, Z disc
纯化	Affinity purification

## 抗原信息

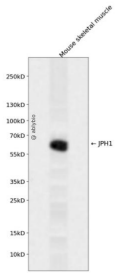
抗原信息	Recombinant fusion protein containing a sequence corresponding to amino acids 410-640 of human JPH1 (NP_065698.1).
序列	RELSPDFYQPGPDYVKQRFQEGVDAKENPEEKVPEKPPTPKESPHFYRKGTTPPRSPEASPKHSHSPASSPKPLKKQNPSS GARLNQDKRSVADEQVTAIVNKPLMSKAPTKEAGAVVPQSKYSGRHHIPNPSNGELHSQYHGYYVVKLNAPQHPPVDVED GDGSSQSSSALVHKPSANKWSPSKSVTKPVAKESKAEPKAKKSELAIPKNPASNDSCPALEKEANS GPNSI

## 靶点信息

研究背景	Junctional complexes between the plasma membrane and endoplasmic/sarcoplasmic reticulum are a common feature of all excitable cell types and mediate cross talk between cell surface and intracellular ion channels. The protein encoded by this gene is a component of junctional complexes and is composed of a C-terminal hydrophobic segment spanning the endoplasmic/sarcoplasmic reticulum membrane and a remaining cytoplasmic domain that shows specific affinity for the plasma membrane. This gene is a member of the junctophilin gene family. [provided by RefSeq, Jul 2008]
------	--

基因ID	56704
基因名	JPH1
Swiss	Q9HDC5
别名	CMT2K;JP-1;JP1;JPH1

## 产品验证



Western blot analysis of JPH1 expressed in Mouse skeletal muscle using JPH1 Rabbit pAb at 1:1000. Secondary antibody: HRP Goat Anti-Rabbit IgG (H+L) at 1:5000. Lysates/proteins: 30ug per lane. Blocking buffer: 5% non-fat dry milk in TBST. Detection: ECL Enhanced Kit. Exposure time: 120s.

## 实验步骤

访问官网浏览详情: [www.ablybio.cn](http://www.ablybio.cn)