

PLD3 Rabbit pAb

货号: **AYP21639**

产品信息

反应	Mouse
宿主	Rabbit
克隆性	Polyclonal
预测反应	
应用	WB IF/ICC
推荐浓度	WB: 1:500 - 1:2000 IF/ICC: 1:50 - 1:200
理论分子量	
实测分子量	55kDa
形式	Liquid
保存条件	Store at -20°C. Avoid freeze / thaw cycles. Buffer: PBS with 0.01% thiomersal,50% glycerol,pH7.3.
偶联物	Unconjugated
阳性对照	Mouse testis,Mouse lung,Mouse brain
细胞定位	extracellular exosome,lysosomal lumen
纯化	Affinity purification

抗原信息

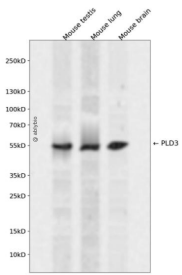
抗原信息	Recombinant fusion protein containing a sequence corresponding to amino acids 279-490 of human PLD3 (NP_001026866).
序列	MEICLNGTPALAYLASAPPPLCPSGRTPDLKALLNVVDNARSFYVAVMNYLPTLEFSHPHRFWPAIDGGLRRATYERGVKV RLISCWGHSEPSMRAFLLSLAALRDNHSTHSIQVKLFVVPADAEQARIPYARVNHNKYMVTERATYIGTSNWSGNYFTET AGTSLLVLTQNGRGLRSQLEAIFLRDWDSPYSHDLDTADSVDGACRLL

靶点信息

研究背景	This gene encodes a member of the phospholipase D (PLD) family of enzymes that catalyze the hydrolysis of membrane phospholipids. The encoded protein is a single-pass type II membrane protein and contains two PLD phosphodiesterase domains. This protein influences processing of amyloid-beta precursor protein. Mutations in this gene are associated with Alzheimer disease risk. Alternatively spliced transcript variants encoding the same protein have been found for this gene. [provided by RefSeq, Apr 2014]
------	--

基因ID	23646
基因名	PLD3
Swiss	Q8IV08
别名	AD19;HU-K4;HUK4;PLD3

产品验证



Western blot analysis of PLD3 expressed in Mouse testis, Mouse lung, Mouse brain using PLD3 Rabbit pAb at 1:1000. Secondary antibody: HRP Goat Anti-Rabbit IgG (H+L) at 1:5000. Lysates/proteins: 30ug per lane. Blocking buffer: 5% non-fat dry milk in TBST. Detection: ECL Enhanced Kit. Exposure time: 120s.

实验步骤

访问官网浏览详情: www.ablybio.cn