

C1QL1 Rabbit pAb

货号: **AYP21632**

产品信息

反应	Human,Mouse,Rat
宿主	Rabbit
克隆性	Polyclonal
预测反应	
应用	WB
推荐浓度	WB: 1:500 - 1:2000
理论分子量	
实测分子量	26kDa
形式	Liquid
保存条件	Store at -20°C. Avoid freeze / thaw cycles. Buffer: PBS with 0.01% thiomersal,50% glycerol,pH7.3.
偶联物	Unconjugated
阳性对照	SH-SY5Y,Mouse brain,Rat brain
细胞定位	cerebellar climbing fiber to Purkinje cell synapse,climbing fiber,cytoplasm,extracellular space,presynapse ,synaptic cleft
纯化	Affinity purification

抗原信息

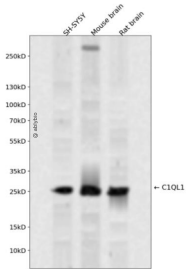
抗原信息	A synthetic peptide corresponding to a sequence within amino acids 38-88 of human C1QL1 (NP_006679.1).
序列	RGPGAGARTDGGDALSEQSGAPPSTLVQGPQGKPGRTGKPGPPGPPGDPG

靶点信息

研究背景	May regulate the number of excitatory synapses that are formed on hippocampus neurons. Has no effect on inhibitory synapses (By similarity).
基因ID	10882
基因名	C1QL1

Swiss	O75973
别名	C1QRF;C1QTNF14;CRF;C1QL1

产品验证



Western blot analysis of C1QL1 expressed in SH-SY5Y, Mouse brain, Rat brain using C1QL1 Rabbit pAb at 1:1000. Secondary antibody: HRP Goat Anti-Rabbit IgG (H+L) at 1:5000. Lysates/proteins: 30ug per lane. Blocking buffer: 5% non-fat dry milk in TBST. Detection: ECL Enhanced Kit. Exposure time: 120s.

实验步骤

访问官网浏览详情: www.ablybio.cn