

IPO7 Rabbit pAb

货号: **AYP21631**

产品信息

反应	Human,Mouse,Rat
宿主	Rabbit
克隆性	Polyclonal
预测反应	
应用	WB IF/ICC
推荐浓度	WB: 1:500 - 1:2000 IF/ICC: 1:50 - 1:200
理论分子量	
实测分子量	130kDa
形式	Liquid
保存条件	Store at -20°C. Avoid freeze / thaw cycles. Buffer: PBS with 0.01% thiomersal,50% glycerol,pH7.3.
偶联物	Unconjugated
阳性对照	U-251MG,HepG2,HeLa,Mouse heart,Mouse brain,Rat brain
细胞定位	cytosol,nuclear envelope,nuclear pore,nucleoplasm
纯化	Affinity purification

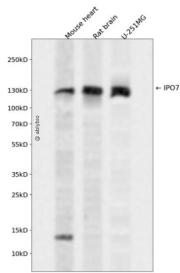
抗原信息

抗原信息	A synthetic peptide corresponding to a sequence within amino acids 900 to the C-terminus of human IPO 7 (NP_006382.1).
序列	ELGSDEDDIDEDGQEYLEILAKQAGEDGDDEDWEEDDAEETALEGYSTIIDDEDNPVDEYQIFKAIFQTIQNRNPVWYQAL THGLNEEQRKQLQDIATLADQRRRAAHESKMIEKHGGYKFSAPVVPSSFNFGGPAPGMN

靶点信息

研究背景	The importin-alpha/beta complex and the GTPase Ran mediate nuclear import of proteins with a classical nuclear localization signal. The protein encoded by this gene is a member of a class of approximately 20 potential Ran targets that share a sequence motif related to the Ran-binding site of importin-beta. Similar to importin-beta, this protein prevents the activation of Ran's GTPase by RanGAP1 and inhibits nucleotide exchange on RanGTP, and also binds directly to nuclear pore complexes where it competes for binding sites with importin-beta and transportin. This protein has a Ran-dependent transport cycle and it can cross the nuclear envelope rapidly and in both directions. At least four importin beta-like transport receptors, namely importin beta itself, transportin, RanBP5 and RanBP7, directly bind and import ribosomal proteins. [provided by RefSeq, Jul 2008]
基因ID	10527
基因名	IPO7
Swiss	O95373
别名	Imp7;RANBP7;IPO7

产品验证



Western blot analysis of IPO7 expressed in Mouse heart,Rat brain,U-251MG using IPO7 Rabbit pAb at 1:1000. Secondary antibody: HRP Goat Anti-Rabbit IgG (H+L) at 1:5000. Lysates/proteins: 30ug per lane. Blocking buffer: 5% non-fat dry milk in TBST. Detection: ECL Enhanced Kit. Exposure time: 120s.

实验步骤

访问官网浏览详情: www.ablybio.cn