

Bcl2(Isoform Beta) Rabbit pAb

货号: AYP21629

产品信息

反应	Human,Rat
宿主	Rabbit
克隆性	Polyclonal
预测反应	
应用	WB
推荐浓度	WB: 1:500 - 1:1000
理论分子量	
实测分子量	22KDa
形式	Liquid
保存条件	Store at -20°C. Avoid freeze / thaw cycles. Buffer: PBS with 0.01% thiomersal,50% glycerol,pH7.3.
偶联物	Unconjugated
阳性对照	Rat liver
细胞定位	cytoplasm,cytosol,endoplasmic reticulum,mitochondrial crista,mitochondrial membrane,mitochondrial outer membrane,mitochondrion,nuclear membrane,nucleoplasm,nucleus,perinuclear region of cytoplasm
纯化	Affinity purification

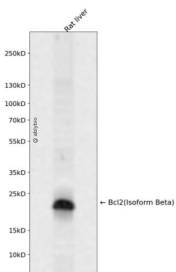
抗原信息

抗原信息	A synthetic peptide corresponding to a sequence within amino acids 150-199 of mouse Bcl2(Isoform Beta) (NP_803129.2).
序列	FGGVMCVESVNREMSPLVDNIALWMTEYLNRLHTWIQDNGGWVGACLVE

靶点信息

研究背景	This gene encodes a member of the B cell lymphoma 2 protein family. Members of this family regulate cell death in multiple cell types and can have either proapoptotic or antiapoptotic activities. The protein encoded by this gene inhibits mitochondrial-mediated apoptosis. This protein is an integral outer mitochondrial membrane protein that functions as part of signaling pathway that controls mitochondrial permeability in response to apoptotic stimuli. This protein may also play a role in neuron cell survival and autophagy. Abnormal expression and chromosomal translocations of this gene are associated with cancer progression in numerous tissues. Alternate splicing results in multiple transcript variants. [provided by RefSeq, Sep 2015]
基因ID	12043
基因名	
Swiss	P10417
别名	Bcl-2;C430015F12Rik;D630044D05Rik

产品验证



Western blot analysis of Bcl2(Isoform Beta) expressed in Rat liver using Bcl2(Isoform Beta) Rabbit pAb at 1:1000. Secondary antibody: HRP Goat Anti-Rabbit IgG (H+L) at 1:5000. Lysates/proteins: 30ug per lane. Blocking buffer: 5% non-fat dry milk in TBST. Detection: ECL Enhanced Kit. Exposure time: 120s.

实验步骤

访问官网浏览详情: www.ablybio.cn