

# RCE1 Rabbit pAb

货号: AYP21627

## 产品信息

反应	Human,Mouse,Rat
宿主	Rabbit
克隆性	Polyclonal
预测反应	
应用	WB IHC IF/ICC
推荐浓度	<b>WB:</b> 1:500 - 1:2000 <b>IHC:</b> 1:50 - 1:200 <b>IF/ICC:</b> 1:50 - 1:200
理论分子量	
实测分子量	36kDa
形式	Liquid
保存条件	Store at -20°C. Avoid freeze / thaw cycles. Buffer: PBS with 0.01% thiomersal,50% glycerol,pH7.3.
偶联物	Unconjugated
阳性对照	Mouse kidney,Rat kidney
细胞定位	cytosol,plasma membrane
纯化	Affinity purification

## 抗原信息

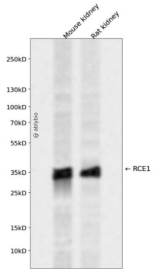
抗原信息	A synthetic peptide corresponding to a sequence within amino acids 100-200 of human RCE1 (NP_005124.1).
序列	SLLTLMGFRLEGIFPAALLPLLLTMILFLGPLMQLSMDPCDLADGLKVVLAPRSWARCLTDMRWLRNQVIAPLTEELVFRA CMLPMLAPCMGLGPAVFTC

## 靶点信息

研究背景	This gene encodes an integral membrane protein which is classified as a member of the metalloproteinase family. This enzyme is thought to function in the maintenance and processing of CAAX-type prenylated proteins. [provided by RefSeq, Jul 2008]
基因ID	9986

基因名	RCE1
Swiss	Q9Y256
别名	FACE2;RCE1A;RCE1B;RCE1

## 产品验证



Western blot analysis of RCE1 expressed in Mouse kidney,Rat kidney using RCE1 Rabbit pAb at 1:1000. Secondary antibody: HRP Goat Anti-Rabbit IgG (H+L) at 1:5000. Lysates/proteins: 30ug per lane. Blocking buffer: 5% non-fat dry milk in TBST. Detection: ECL Enhanced Kit. Exposure time: 120s.

## 实验步骤

访问官网浏览详情: [www.ablybio.cn](http://www.ablybio.cn)