

GTPBP6 Rabbit pAb

货号: **AYP21618**

产品信息

反应	Human,Mouse,Rat
宿主	Rabbit
克隆性	Polyclonal
预测反应	
应用	WB IF/ICC
推荐浓度	WB: 1:500 - 1:2000 IF/ICC: 1:50 - 1:200
理论分子量	
实测分子量	57kDa
形式	Liquid
保存条件	Store at -20°C. Avoid freeze / thaw cycles. Buffer: PBS with 0.01% thiomersal,50% glycerol,pH7.3.
偶联物	Unconjugated
阳性对照	Mouse thymus,Rat thymus,Rat spleen
细胞定位	cytoplasm
纯化	Affinity purification

抗原信息

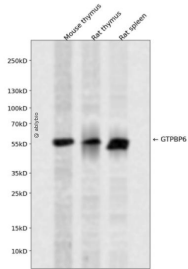
抗原信息	Recombinant fusion protein containing a sequence corresponding to amino acids 140-350 of human GTPBP6 (NP_036359.3).
序列	MVVSTKTPDRKLIFGKGNFEHLTEKIRGSPDITCVFLNVERMAAPTKELEAAWGEVDFRFTVVLHIFRCNARTKEARLQV ALAEMPLHRSNLKRVDVAHLYRGVGSRYIMGSGESFMQLQQRLLREKEAKIRKALDRLRKKRHLLRRQRTRREFPVISVVG Y TNCGKTTLIKALTGDAAIQPRDQLFATLDVTAHAGTLPSRMTVLYVDT

靶点信息

研究背景	This gene encodes a GTP binding protein and is located in the pseudoautosomal region (PAR) at the end of the short arms of the X and Y chromosomes. [provided by RefSeq, Nov 2011]
基因ID	8225

基因名	GTPBP6
Swiss	O43824
别名	PGPL;GTPBP6

产品验证



Western blot analysis of GTPBP6 expressed in Mouse thymus,Rat thymus,Rat spleen using GTPBP6 Rabbit pAb at 1:1000. Secondary antibody: HRP Goat Anti-Rabbit IgG (H+L) at 1:5000. Lysates/proteins: 30 ug per lane. Blocking buffer: 5% non-fat dry milk in TBST. Detection: ECL Enhanced Kit. Exposure time: 120s.

实验步骤

访问官网浏览详情: www.ablybio.cn