

SLC12A3 Rabbit pAb

货号: **AYP21616**

产品信息

反应	Human,Mouse,Monkey
宿主	Rabbit
克隆性	Polyclonal
预测反应	
应用	WB
推荐浓度	WB: 1:1000 - 1:5000
理论分子量	
实测分子量	100-170KDa
形式	Liquid
保存条件	Store at -20°C. Avoid freeze / thaw cycles. Buffer: PBS with 0.01% thiomersal,50% glycerol,pH7.3.
偶联物	Unconjugated
阳性对照	293T,COS-7,Mouse kidney
细胞定位	apical plasma membrane,cytosol,extracellular exosome,plasma membrane
纯化	Affinity purification

抗原信息

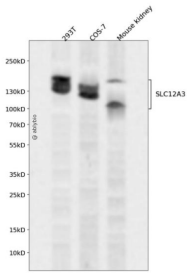
抗原信息	Recombinant fusion protein containing a sequence corresponding to amino acids 1-140 of human SLC12A3 (NP_000330.2).
序列	MAELPTTETPGDATLCSGRFTISTLLSSDEPSPPAAYDSSHPSHLTHSSTFCMRTFGYNTIDVVPTYEHYANSTQPGEPKVRPTLADLHSLKQEGRHLHALAFDSRPSHEMTDGLVEGEAGTSSEKNPEEPVRFGWVK

靶点信息

研究背景	This gene encodes a renal thiazide-sensitive sodium-chloride cotransporter that is important for electrolyte homeostasis. This cotransporter mediates sodium and chloride reabsorption in the distal convoluted tubule. Mutations in this gene cause Gitelman syndrome, a disease similar to Bartter's syndrome, that is characterized by hypokalemic alkalosis combined with hypomagnesemia, low urinary calcium, and increased renin activity associated with normal blood pressure. This cotransporter is the target for thiazide diuretics that are used for treating high blood pressure. Multiple transcript variants encoding different isoforms have been found for this gene. [provided by RefSeq, Jul 2008]
------	---

基因ID	6559
基因名	SLC12A3
Swiss	P55017
别名	NCC;NCCT;TSC;SLC12A3

产品验证



Western blot analysis of SLC12A3 expressed in 293T, COS-7, Mouse kidney using SLC12A3 Rabbit pAb at 1:1000. Secondary antibody: HRP Goat Anti-Rabbit IgG (H+L) at 1:5000. Lysates/proteins: 30ug per lane. Blocking buffer: 5% non-fat dry milk in TBST. Detection: ECL Enhanced Kit. Exposure time: 120s.

实验步骤

访问官网浏览详情: www.ablybio.cn