

SLC8A3 Rabbit pAb

货号: AYP21615

产品信息

反应	Mouse
宿主	Rabbit
克隆性	Polyclonal
预测反应	
应用	WB
推荐浓度	WB: 1:500 - 1:1000
理论分子量	
实测分子量	110kDa
形式	Liquid
保存条件	Store at -20°C. Avoid freeze / thaw cycles. Buffer: PBS with 0.01% thiomersal,50% glycerol,pH7.3.
偶联物	Unconjugated
阳性对照	Mouse skeletal muscle,Mouse lung
细胞定位	axon,axon terminus,dendrite,dendritic spine,neuromuscular junction,perikaryon,perinuclear region of cytoplasm,plasma membrane,postsynapse,postsynaptic density,synapse
纯化	Affinity purification

抗原信息

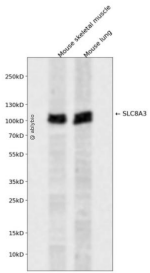
抗原信息	A synthetic peptide corresponding to a sequence within amino acids 550-650 of human SLC8A3 (NP_489479.1).
序列	VKVLRTSGARGTVIVPFRTVEGTAKGGGEDFEDTYGELEFKNDETVKTIRVKIVDEEYERQENFFIALGEPKWMERGISALLSPDRKLTMEEEEAKRIA

靶点信息

研究背景	This gene encodes a member of the sodium/calcium exchanger integral membrane protein family. Na ⁺ /Ca ²⁺ exchange proteins are involved in maintaining Ca ²⁺ homeostasis in a wide variety of cell types. The protein is regulated by intracellular calcium ions and is found in both the plasma membrane and intracellular organellar membranes, where exchange of Na ⁺ for Ca ²⁺ occurs in an electrogenic manner. Alternative splicing has been observed for this gene and multiple variants have been described. [provided by RefSeq, Aug 2013]
------	--

基因ID	6547
基因名	SLC8A3
Swiss	P57103
别名	NCX3;SLC8A3

产品验证



Western blot analysis of SLC8A3 expressed in Mouse skeletal muscle, Mouse lung using SLC8A3 Rabbit pAb at 1:1000. Secondary antibody: HRP Goat Anti-Rabbit IgG (H+L) at 1:5000. Lysates/proteins: 30ug per lane. Blocking buffer: 5% non-fat dry milk in TBST. Detection: ECL Enhanced Kit. Exposure time: 120s.

实验步骤

访问官网浏览详情: www.ablybio.cn