

LLGL2 Rabbit pAb

货号: **AYP21611**

产品信息

反应	Human
宿主	Rabbit
克隆性	Polyclonal
预测反应	
应用	WB
推荐浓度	WB: 1:1000 - 1:5000
理论分子量	113kDa
实测分子量	113kDa
形式	Liquid
保存条件	Store at -20°C. Avoid freeze / thaw cycles. Buffer: PBS with 0.01% thiomersal, 50% glycerol, pH7.3.
偶联物	Unconjugated
阳性对照	HeLa
细胞定位	adherens junction, cortical actin cytoskeleton, cytoplasm, cytosol, plasma membrane
纯化	Affinity purification

抗原信息

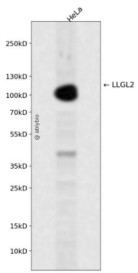
抗原信息	Recombinant fusion protein containing a sequence corresponding to amino acids 921-1020 of human LLGL2 (NP_001026973.1).
序列	FSLSTKWLVEPRCLVDSAETKNHRPGNGAGPKKAPSRARNSGTQSDGEEKQPGLVMERALLSDERVLKEIQSTLEGDRG SGNWRSHRAAVGC SL SNGGAE

靶点信息

研究背景	The lethal (2) giant larvae protein of Drosophila plays a role in asymmetric cell division, epithelial cell polarity, and cell migration. This human gene encodes a protein similar to lethal (2) giant larvae of Drosophila. In fly, the protein's ability to localize cell fate determinants is regulated by the atypical protein kinase C (aPKC). In human, this protein interacts with aPKC-containing complexes and is cortically localized in mitotic cells. Alternative splicing results in multiple transcript variants encoding different isoforms. [provided by RefSeq, Jul 2008]
------	---

基因ID	3993
基因名	LLGL2
Swiss	Q6P1M3
别名	HGL;Hugl-2;LGL2;LLGL2

产品验证



Western blot analysis of LLGL2 expressed in HeLa using LLGL2 Rabbit pAb at 1:1000. Secondary antibody: HRP Goat Anti-Rabbit IgG (H+L) at 1:5000. Lysates/proteins: 30ug per lane. Blocking buffer: 5% non-fat dry milk in TBST. Detection: ECL Enhanced Kit. Exposure time: 120s.

实验步骤

访问官网浏览详情: www.ablybio.cn