

# CRYZ Rabbit pAb

货号: **AYP21601**

## 产品信息

反应	Human,Mouse,Rat
宿主	Rabbit
克隆性	Polyclonal
预测反应	
应用	WB
推荐浓度	<b>WB:</b> 1:500 - 1:2000
理论分子量	20kDa/31kDa/35kDa
实测分子量	35KDa
形式	Liquid
保存条件	Store at -20°C. Avoid freeze / thaw cycles. Buffer: PBS with 0.01% thiomersal,50% glycerol,pH7.3.
偶联物	Unconjugated
阳性对照	HeLa
细胞定位	Cytoplasm
纯化	Affinity purification

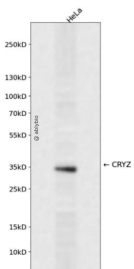
## 抗原信息

抗原信息	Recombinant fusion protein containing a sequence corresponding to amino acids 1-329 of human CRYZ ( NP_001123514.1).
序列	MATGQKLMRAVRVFEFGGPEVLKLRSDIAPVPIKDHQVLIKVHACGVNPNVETIYIRSGTYSRKPLLPYTPGSDVAGVIEAVGD NASAFKKGDRVFTSSTISGGYAEYALAADHTVYKLPEKLDKQGAAGIPIYFTAYRALIHSACVKAGESVLVHGASGGVGLA ACQIARAYGLKILGTAGTEEGQKIVLQNGAHEVFNHREVNYIDKIKKYVGEKGIDIIIEMLANVNLSKDLSLLSHGGRVIVVGS RGTIEINPRDTMAKESIIGVTLFSSTKEEFQYAAALQAGMEIGWLKPVIGSQYPLEKVAEAHENIIHGSGATGKMILL

## 靶点信息

研究背景	Crystallins are separated into two classes: taxon-specific, or enzyme, and ubiquitous. The latter class constitutes the major proteins of vertebrate eye lens and maintains the transparency and refractive index of the lens. The former class is also called phylogenetically-restricted crystallins. This gene encodes a taxon-specific crystallin protein which has NADPH-dependent quinone reductase activity distinct from other known quinone reductases. It lacks alcohol dehydrogenase activity although by similarity it is considered a member of the zinc-containing alcohol dehydrogenase family. Unlike other mammalian species, in humans, lens expression is low. Alternatively spliced transcript variants encoding different isoforms have been found for this gene. One pseudogene is known to exist.
基因ID	1429
基因名	CRYZ
Swiss	Q08257
别名	CRYZ

## 产品验证



Western blot analysis of CRYZ expressed in HeLa using CRYZ Rabbit pAb at 1:1000. Secondary antibody: HRP Goat Anti-Rabbit IgG (H+L) at 1:5000. Lysates/proteins: 30ug per lane. Blocking buffer: 5% non-fat dry milk in TBST. Detection: ECL Enhanced Kit. Exposure time: 120s.

## 实验步骤

访问官网浏览详情: [www.ablybio.cn](http://www.ablybio.cn)