

HPCAL1 Rabbit pAb

货号: AYP21596

产品信息

反应	Human,Mouse,Rat
宿主	Rabbit
克隆性	Polyclonal
预测反应	
应用	WB IP
推荐浓度	WB: 1:500 - 1:2000 IP: 1:20 - 1:100
理论分子量	22kDa
实测分子量	18KDa
形式	Liquid
保存条件	Store at -20°C. Avoid freeze / thaw cycles. Buffer: PBS with 0.01% thiomersal,50% glycerol,pH7.3.
偶联物	Unconjugated
阳性对照	HeLa
细胞定位	Lipid-anchor,Membrane
纯化	Affinity purification

抗原信息

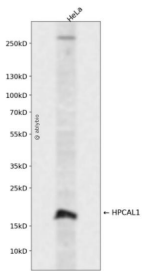
抗原信息	Recombinant fusion protein containing a sequence corresponding to amino acids 1-193 of human HPCAL1 (NP_002140.2).
序列	MGKQNSKLRPEVLQDLRENTFTDHELQEWYKGLKDCPTGHLTVDEFKKIYANFFPYGDASKFAEHVFRFTDNGDGTI DFREFIIALSVTSRGKLEQKLKWFMSYDLGNGYISRSEMLEIVQAIYKMVSSVMKMPDESTPEKRTDKIFRQMDTNN GKLSLEEFIRGAKSDPSIVRLLQCDPSSASQF

靶点信息

研究背景	The protein encoded by this gene is a member of neuron-specific calcium-binding proteins family found in the retina and brain. It is highly similar to human hippocalcin protein and nearly identical to the rat and mouse hippocalcin like-1 proteins. It may be involved in the calcium-dependent regulation of rhodopsin phosphorylation and may be of relevance for neuronal signalling in the central nervous system. Several alternatively spliced transcript variants encoding the same protein have been found for this gene.
------	---

基因ID	3241
基因名	HPCAL1
Swiss	P37235
别名	HPCAL1;BDR1;HLP2;VILIP-3

产品验证



Western blot analysis of HPCAL1 expressed in HeLa using HPCAL1 Rabbit pAb at 1:1000. Secondary antibody: HRP Goat Anti-Rabbit IgG (H+L) at 1:5000. Lysates/proteins: 30ug per lane. Blocking buffer: 5% non-fat dry milk in TBST. Detection: ECL Enhanced Kit. Exposure time: 120s.

实验步骤

访问官网浏览详情: www.ablybio.cn