

# ARL6IP1 Rabbit pAb

货号: **AYP21587**

## 产品信息

反应	Human,Mouse,Rat
宿主	Rabbit
克隆性	Polyclonal
预测反应	
应用	WB IHC IF/ICC
推荐浓度	<b>WB:</b> 1:500 - 1:2000 <b>IHC:</b> 1:50 - 1:100 <b>IF/ICC:</b> 1:50 - 1:100
理论分子量	
实测分子量	23KDa
形式	Liquid
保存条件	Store at -20°C. Avoid freeze / thaw cycles. Buffer: PBS with 0.01% thiomersal,50% glycerol,pH7.3.
偶联物	Unconjugated
阳性对照	293T
细胞定位	cytosol
纯化	Affinity purification

## 抗原信息

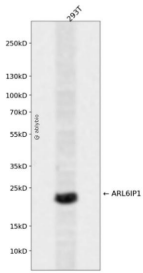
抗原信息	A synthetic peptide corresponding to a sequence within amino acids 1-100 of human ARL6IP1 (NP_055976.1).
序列	MAEGDNRSTNLLAAETASLEEQLQGWEVMLMADKVLRWERAWFPPAIMGVVSLVFLIIYYLDPSVLSGVSCFVMFLCLA DYLVPILAPRIFGSNKWTTE

## 靶点信息

研究背景	This gene belongs to the ARL6ip family and encodes a transmembrane protein that is predominantly localized to intracytoplasmic membranes. It is highly expressed in early myeloid progenitor cells and thought to be involved in protein transport, membrane trafficking, or cell signaling during hematopoietic maturation. Mutations in this gene are associated with spastic paraplegia 61 (SPG61). Alternatively spliced transcript variants have been found for this gene.
------	---

基因ID	23204
基因名	ARL6IP1
Swiss	Q15041
别名	ARL6IP1;AIP1;ARL6IP;ARMER;SPG61

## 产品验证



Western blot analysis of ARL6IP1 expressed in 293T using ARL6IP1 Rabbit pAb at 1:1000. Secondary antibody: HRP Goat Anti-Rabbit IgG (H+L) at 1:5000. Lysates/proteins: 30ug per lane. Blocking buffer: 5% non-fat dry milk in TBST. Detection: ECL Enhanced Kit. Exposure time: 120s.

## 实验步骤

访问官网浏览详情: [www.ablybio.cn](http://www.ablybio.cn)