

# CLUH Rabbit pAb

货号: **AYP21576**

## 产品信息

反应	Human,Mouse
宿主	Rabbit
克隆性	Polyclonal
预测反应	
应用	WB IHC IF/ICC
推荐浓度	<b>WB:</b> 1:1000 - 1:4000 <b>IHC:</b> 1:50 - 1:200 <b>IF/ICC:</b> 1:50 - 1:200
理论分子量	146kDa
实测分子量	160KDa
形式	Liquid
保存条件	Store at -20°C. Avoid freeze / thaw cycles. Buffer: PBS with 0.01% thiomersal,50% glycerol,pH7.3.
偶联物	Unconjugated
阳性对照	293T
细胞定位	Cytoplasm,Cytoplasmic granule
纯化	Affinity purification

## 抗原信息

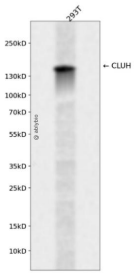
抗原信息	Recombinant fusion protein containing a sequence corresponding to amino acids 1120-1309 of human CLUH (NP_056044.3).
序列	YDLSLRFLENALAVSTKYHGPKALKVALSHHLVARVYESKAEFRSALQHEKEGYTIYKTQLGEDHEKTKESSEYLKCLTQQA VALQRTMNEIYRNGSSANIPPLKFTAPSMASVLEQLNVINGILFIPLSQKDLENLKAEVARRHQLQEASRNRDRAEPMATEP APAGAPGDLGSQPPAAKDPSPSVQG

## 靶点信息

研究背景	mRNA-binding protein involved in proper cytoplasmic distribution of mitochondria. Specifically binds mRNA of nuclear-encoded mitochondrial proteins in the cytoplasm and regulates transport or translation of these transcripts close to mitochondria, playing a role in mitochondrial biogenesis.
------	---

基因ID	23277
基因名	CLUH
Swiss	O75153
别名	CLUH;CLU1;KIAA0664

## 产品验证



Western blot analysis of CLUH expressed in 293T using CLUH Rabbit pAb at 1:1000. Secondary antibody: HRP Goat Anti-Rabbit IgG (H+L) at 1:5000. Lysates/proteins: 30ug per lane. Blocking buffer: 5% non-fat dry milk in TBST. Detection: ECL Enhanced Kit. Exposure time: 120s.

## 实验步骤

访问官网浏览详情: [www.ablybio.cn](http://www.ablybio.cn)