

# TOMM34 Rabbit pAb

货号: **AYP21575**

## 产品信息

反应	Human,Mouse
宿主	Rabbit
克隆性	Polyclonal
预测反应	
应用	WB IHC
推荐浓度	<b>WB:</b> 1:500 - 1:2000 <b>IHC:</b> 1:50 - 1:200
理论分子量	34kDa
实测分子量	34kDa
形式	Liquid
保存条件	Store at -20°C. Avoid freeze / thaw cycles. Buffer: PBS with 0.01% thiomersal,50% glycerol,pH7.3.
偶联物	Unconjugated
阳性对照	HeLa
细胞定位	Cytoplasm,Cytoplasmic side,Mitochondrion outer membrane,Peripheral membrane protein
纯化	Affinity purification

## 抗原信息

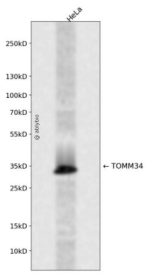
抗原信息	Recombinant fusion protein containing a sequence corresponding to amino acids 1-309 of human TOMM34 (NP_006800.2).
序列	MAPKFPDSVEELRAAGNESFRNGQYAEASALYGRALRVLQAQGSSDPEEESVLYSNRAACHLKDGNCRDCKDCTSALALVPFSIKPLLRASAYEALEKYP MAYVDYKTVLQIDDNVTS AVEGINRMTRALMDSLGP EWRLKLP SIPLVPVSAQQRWNSLPSENHKEMAKSKSETTATKNRVPSAGDVEKARVLKEEGNELVKKGNHKKAIKEYSESLCSNLESATYSNRALCYLVLKQYTEAVKDCTEALKLDGKNVKAFYRRAQAHKALKDYKSSFADISNLLQIEPRNGPAQKLRQEVKQNLH

## 靶点信息

研究背景	The protein encoded by this gene is involved in the import of precursor proteins into mitochondria. The encoded protein has a chaperone-like activity, binding the mature portion of unfolded proteins and aiding their import into mitochondria. This protein, which is found in the cytoplasm and sometimes associated with the outer mitochondrial membrane, has a weak ATPase activity and contains 6 TPR repeats.
------	--

基因ID	10953
基因名	TOMM34
Swiss	Q15785
别名	TOMM34;HTOM34P;TOM34;URCC3

## 产品验证



Western blot analysis of TOMM34 expressed in HeLa using TOMM34 Rabbit pAb at 1:1000. Secondary anti body: HRP Goat Anti-Rabbit IgG (H+L) at 1:5000. Lysates/proteins: 30ug per lane. Blocking buffer: 5% n-fat dry milk in TBST. Detection: ECL Enhanced Kit. Exposure time: 120s.

## 实验步骤

访问官网浏览详情: [www.ablybio.cn](http://www.ablybio.cn)