

# PHGDH Rabbit pAb

货号: **AYP21572**

## 产品信息

反应	Human,Mouse,Rat
宿主	Rabbit
克隆性	Polyclonal
预测反应	
应用	WB IF/ICC
推荐浓度	<b>WB:</b> 1:500 - 1:2000 <b>IF/ICC:</b> 1:50 - 1:200
理论分子量	56kDa
实测分子量	57KDa
形式	Liquid
保存条件	Store at -20°C. Avoid freeze / thaw cycles. Buffer: PBS with 0.02% sodium azide,50% glycerol,pH7.3.
偶联物	Unconjugated
阳性对照	HeLa
细胞定位	cytosol,extracellular exosome
纯化	Affinity purification

## 抗原信息

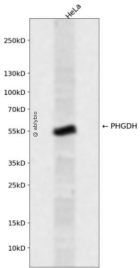
抗原信息	Recombinant fusion protein containing a sequence corresponding to amino acids 264-533 of human PHGDH (NP_006614.2).
序列	EEPPRDRALVDHENVISCPHLGASTKEAQRSRGEEIAVQFVDMVKGKSLTGVVNAQALTSAFPHTKPKWIGLAEALGTLM RAWAGSPKGTIQVITQGTSLKNAGNCLSPAVIVGLLKEASKQADVNLVNAKLLVKEAGLNVTTSHSPAAPGEQGFGECLA VALAGAPYQAVGLVQGTTPLVQLGNGAVFRPEVPLRRDLPLLLFRTQTSDPAMLPTMIGLLAEAGVRLLSYQTSLVSDGET WHVMGISSLLPSLEAWKQHVTEAFQFHF

## 靶点信息

研究背景	This gene encodes the enzyme which is involved in the early steps of L-serine synthesis in animal cells. L-serine is required for D-serine and other amino acid synthesis. The enzyme requires NAD/NADH as a cofactor and forms homotetramers for activity. Mutations in this gene have been found in a family with congenital microcephaly, psychomotor retardation and other symptoms. Multiple alternatively spliced transcript variants have been found, however the full-length nature of most are not known.
------	--

基因ID	26227
基因名	PHGDH
Swiss	O43175
别名	PHGDH;3-PGDH;3PGDH;HEL-S-113;NLS;NLS1;PDG;PGAD;PGD;PGDH;PHGDHD;SERA

### 产品验证



Western blot analysis of PHGDH expressed in HeLa using PHGDH Rabbit pAb at 1:1000. Secondary antibody: HRP Goat Anti-Rabbit IgG (H+L) at 1:5000. Lysates/proteins: 30ug per lane. Blocking buffer: 5% non-fat dry milk in TBST. Detection: ECL Enhanced Kit. Exposure time: 120s.

### 实验步骤

访问官网浏览详情: [www.ablybio.cn](http://www.ablybio.cn)