

SCYL1 Rabbit pAb

货号: **AYP21517**

产品信息

反应	Human,Mouse,Rat
宿主	Rabbit
克隆性	Polyclonal
预测反应	
应用	WB IHC IF/ICC
推荐浓度	WB: 1:500 - 1:2000 IHC: 1:50 - 1:200 IF/ICC: 1:50 - 1:100
理论分子量	69kDa/78kDa/86kDa/88kDa/89kDa
实测分子量	105KDa
形式	Liquid
保存条件	Store at -20°C. Avoid freeze / thaw cycles. Buffer: PBS with 0.01% thiomersal,50% glycerol,pH7.3.
偶联物	Unconjugated
阳性对照	293T
细胞定位	Cytoplasm,Endoplasmic reticulum-Golgi intermediate compartment,Golgi apparatus,Nucleus,centrosome, cis-Golgi network,cytoskeleton,microtubule organizing center
纯化	Affinity purification

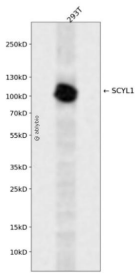
抗原信息

抗原信息	Recombinant fusion protein containing a sequence corresponding to amino acids 460-740 of human SCYL 1 (NP_065731.3).
序列	SASTRHRVLTSAFSRATRDPFAPSRVAGVLGFAATHNLYSMNDCAQKILPVLCLTVDPEKSVRDQAFKAIRSFLSKLESV SEDPTQLEEEVKDVAASSPGMGAAASWAGWAVTGVSSLTSLIRSHPTTAPTETNIPQRPTPEGVPAPAPTPVVPATPTT SGHWETQEEDKDTAEDSSTADRWDDEDWGSLEQEAESVLAQQDDWSTGGQVSRASQVSNSDHKSSKSPESDWSS WEAEGSWEQGWQEPSSQEPDGTGLRLASEYNWGGPESSDKGDPFA

靶点信息

研究背景	This gene encodes a transcriptional regulator belonging to the SCY1-like family of kinase-like proteins. The protein has a divergent N-terminal kinase domain that is thought to be catalytically inactive, and can bind specific DNA sequences through its C-terminal domain. It activates transcription of the telomerase reverse transcriptase and DNA polymerase beta genes. The protein has been localized to the nucleus, and also to the cytoplasm and centrosomes during mitosis. Multiple transcript variants encoding different isoforms have been found for this gene.
基因ID	57410
基因名	SCYL1
Swiss	Q96KG9
别名	SCYL1;GKLP;HT019;NKTL;NTKL;P105;SCAR21;TAPK;TEIF;TRAP

产品验证



Western blot analysis of SCYL1 expressed in 293T using SCYL1 Rabbit pAb at 1:1000. Secondary antibody : HRP Goat Anti-Rabbit IgG (H+L) at 1:5000. Lysates/proteins: 30ug per lane. Blocking buffer: 5% non-fat dry milk in TBST. Detection: ECL Enhanced Kit. Exposure time: 120s.

实验步骤

访问官网浏览详情: www.ablybio.cn