

CCDC6 Rabbit pAb

货号: **AYP21514**

产品信息

| | |
|-------|--|
| 反应 | Human,Mouse,Rat |
| 宿主 | Rabbit |
| 克隆性 | Polyclonal |
| 预测反应 | |
| 应用 | WB IF/ICC |
| 推荐浓度 | WB: 1:500 - 1:2000 IF/ICC: 1:50 - 1:200 |
| 理论分子量 | 53kDa |
| 实测分子量 | 68KDa |
| 形式 | Liquid |
| 保存条件 | Store at -20°C. Avoid freeze / thaw cycles. Buffer: PBS with 0.01% thiomersal,50% glycerol,pH7.3. |
| 偶联物 | Unconjugated |
| 阳性对照 | HeLa |
| 细胞定位 | Cytoplasm,cytoskeleton |
| 纯化 | Affinity purification |

抗原信息

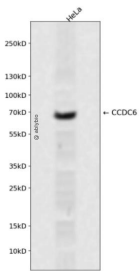
| | |
|------|---|
| 抗原信息 | Recombinant fusion protein containing a sequence corresponding to amino acids 55-222 of human CCDC 6 (NP_005427.2). |
| 序列 | RLEELTNRLASLQQENKVLKIELETYKCLKCKALQEENRDLRKASVTIQARAEQEEEFISNTLFKKIQALQKEKETLAVNYEKEEE FLTNELSRKLMQLQHEKAELEQHLEQEQEFQVNKLMKKIKKLENDTISKQLTLEQLRREKIDLENTLEQEQEALVNRLWKRM D |

靶点信息

| | |
|------|---|
| 研究背景 | This gene encodes a coiled-coil domain-containing protein. The encoded protein is ubiquitously expressed and may function as a tumor suppressor. A chromosomal rearrangement resulting in the expression of a fusion gene containing a portion of this gene and the intracellular kinase-encoding domain of the ret proto-oncogene is the cause of thyroid papillary carcinoma. |
|------|---|

| | |
|-------|-------------------------------|
| 基因ID | 8030 |
| 基因名 | CCDC6 |
| Swiss | Q16204 |
| 别名 | CCDC6;D10S170;H4;PTC;TPC;TST1 |

产品验证



Western blot analysis of CCDC6 expressed in HeLa using CCDC6 Rabbit pAb at 1:1000. Secondary antibody: HRP Goat Anti-Rabbit IgG (H+L) at 1:5000. Lysates/proteins: 30ug per lane. Blocking buffer: 5% non-fat dry milk in TBST. Detection: ECL Enhanced Kit. Exposure time: 120s.

实验步骤

访问官网浏览详情: www.ablybio.cn