

# IPO4 Rabbit pAb

货号: **AYP21507**

## 产品信息

反应	Human,Mouse,Rat
宿主	Rabbit
克隆性	Polyclonal
预测反应	
应用	WB IF/ICC
推荐浓度	<b>WB:</b> 1:500 - 1:2000 <b>IF/ICC:</b> 1:50 - 1:200
理论分子量	119kDa
实测分子量	130KDa
形式	Liquid
保存条件	Store at -20°C. Avoid freeze / thaw cycles. Buffer: PBS with 0.01% thiomersal,50% glycerol,pH7.3.
偶联物	Unconjugated
阳性对照	293T
细胞定位	Cytoplasm,Nucleus
纯化	Affinity purification

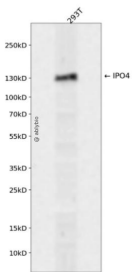
## 抗原信息

抗原信息	Recombinant fusion protein containing a sequence corresponding to amino acids 728-1081 of human IPO 4 (NP_078934.3).
序列	LHKACQSCPSEPNTAALQAALARVPSYMQAVNRERERQVVMVLEALTGVLRSCTLTLPKPPGRLAELCGVLKAVLQRKT ACQDTDEEEEEEDDDQAEYDAMLLEHAGEAIPALAAAAGGDSFAPFFAGFLPLLVCCKTKQGCTVAEKSAVGTLAETIQGL GAASAQFVSRLLPVLLSTAQEADPEVRSNAIFGMGVLAEHGGHPAQEHFPKLLGLLFLLARERHDRVDRDNICGALARLLM ASPTRKPEPQVLAALLHALPLKEDLEEWWTIGRLFSFLYQSSPDQVIDVAPELLRICSLILADNKIPPDTKAALLLLTFLAKQH TDSFQAALGSLPVDKAQELQAVLGLS

## 靶点信息

研究背景	Functions in nuclear protein import as nuclear transport receptor. Serves as receptor for nuclear localization signals (NLS in cargo substrates. Is thought to mediate docking of the importin/substrate complex to the nuclear pore complex (NPC through binding to nucleoporin and the complex is subsequently translocated through the pore by an energy requiring, Ran-dependent mechanism. At the nucleoplasmic side of the NPC, Ran binds to the importin, the importin/substrate complex dissociates and importin is re-exported from the nucleus to the cytoplasm where GTP hydrolysis releases Ran. The directionality of nuclear import is thought to be conferred by an asymmetric distribution of the GTP- and GDP-bound forms of Ran between the cytoplasm and nucleus (By similarity. Mediates the nuclear import of RPS3A. In vitro, mediates the nuclear import of human cytomegalovirus UL84 by recognizing a non-classical NLS.
基因ID	79711
基因名	IPO4
Swiss	Q8TEX9
别名	IPO4;Imp4

## 产品验证



Western blot analysis of IPO4 expressed in 293T using IPO4 Rabbit pAb at 1:1000. Secondary antibody: HRP Goat Anti-Rabbit IgG (H+L) at 1:5000. Lysates/proteins: 30ug per lane. Blocking buffer: 5% non-fat dry milk in TBST. Detection: ECL Enhanced Kit. Exposure time: 120s.

## 实验步骤

访问官网浏览详情: [www.ablybio.cn](http://www.ablybio.cn)