

# SHH Rabbit pAb

货号: **AYP21383**

## 产品信息

反应	Human,Mouse,Rat
宿主	Rabbit
克隆性	Polyclonal
预测反应	
应用	WB
推荐浓度	<b>WB:</b> 1:500 - 1:1000
理论分子量	
实测分子量	45KDa
形式	Liquid
保存条件	Store at -20°C. Avoid freeze / thaw cycles. Buffer: PBS with 0.01% thiomersal,50% glycerol,pH7.3.
偶联物	Unconjugated
阳性对照	A-549,Mouse lung,Mouse brain,Rat lung
细胞定位	axon,dendrite,endoplasmic reticulum,extracellular region,extracellular space,Golgi apparatus,nucleus,plasma membrane,synaptic vesicle
纯化	Affinity purification

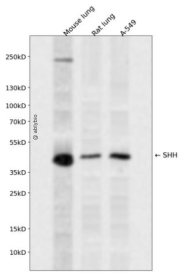
## 抗原信息

抗原信息	Recombinant fusion protein containing a sequence corresponding to amino acids 187-281 of mouse SHH (NP_033196.1).
序列	KAENSVAAKSGGCFPGSATVHLEQGQGTKLVKDLRPGDRVLAADDQGRLLYSDFLTFLLDRDEGAKKVFYVIETLEPRERLLL TAAHLLFVAPHNDS

## 靶点信息

研究背景	Mouse Sonic Hedgehog Homolog (SHH) belongs to a three-protein family called Hedgehog. The other two family members are Indian Hedgehog (IHH) and Desert Hedgehog (DHH). Hedgehog proteins are key signaling molecules in embryonic development. SHH is expressed in various embryonic tissues and plays critical roles in regulating the patterning of many systems, such as limbs and brain. SHH also plays an important role in adult, including the division of adult stem cells and the development of certain cancers and other diseases. Mouse Shh is synthesized as a 437 aa precursor that contains a 24 aa signal sequence and a 413 aa mature region. The mature region is autocatalytically processed into a nonglycosylated, 20 kDa, 174 aa N-terminal fragment (Shh-N), and a catalytic-processing, glycosylated, 34 kDa, 239 aa C-terminal fragment. The 20 kDa Shh-N fragment is the core of the active hedgehog molecule. Mouse Shh-N is 99%, 98%, and 100% aa identical to human, rat and gerbil Shh-N, respectively.
基因ID	20423
基因名	
Swiss	Q62226
别名	9530036O11Rik; Dsh; Hhg1; Hx; Hxl3; M100081

## 产品验证



Western blot analysis of SHH expressed in Mouse lung, Rat lung, A-549 using SHH Rabbit pAb at 1:1000. Secondary antibody: HRP Goat Anti-Rabbit IgG (H+L) at 1:5000. Lysates/proteins: 30ug per lane. Blocking buffer: 5% non-fat dry milk in TBST. Detection: ECL Enhanced Kit. Exposure time: 120s.

## 实验步骤

访问官网浏览详情: [www.ablybio.cn](http://www.ablybio.cn)